



## CLOSED SYSTEMS

*for* SOLVENT  
CONTAINMENT



**VAPLOCK™** is a safety solution for scientists, chemical hygienists, and researchers worldwide, designed to ensure proper delivery and waste containment of industrial chemicals and solvents. A versatile product solution, Vaplock conforms to a broad spectrum of laboratory and industrial applications, useful wherever safety protocol for chemical handling is required or preferred, and through closed-system technology reduces harmful emissions which are potentially hazardous to employees and the environment. Our mission is to create a safer, healthier and cleaner workplace by providing unique, effective and price sensitive solutions to fluid handling problems in the laboratory.

## Closed Systems Introduction

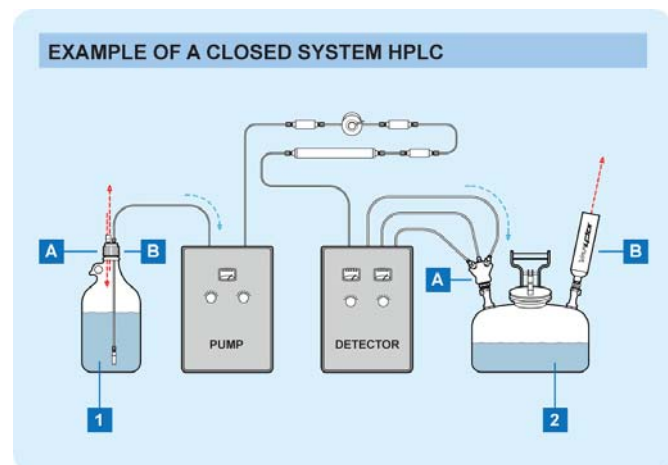
Through leaks, spills, and ventilation, an "open" solvent system will release chemical exhaust directly into the laboratory environment. This introduction may be reduced by adding several key components to the typical instrument. These items are:

**1A** a properly sealed solvent reservoir with secure fluid connections

**1B** a ventilation control valve at the solvent reservoir to displace vacuum while minimizing evaporation

**2A** a properly sealed solvent waste container with secure fluid connections

**2B** an exhaust filter at the waste container to capture escaping fumes.



### 1A SOLVENT RESERVOIR FLUID CONNECTIONS

For a closed-system solvent reservoir, the container first requires a bottle cap with ports to fit the specific tubing sizes removing solvent from the bottle. Vaplock solvent caps provide versatile, leak-resistant connections where mobile phase tubing may be attached securely.

### 1B SOLVENT RESERVOIR VENTILATION CONTROL

In reservoirs where fluid is actively removed and no new solvent or gas pressure is simultaneously added, to complete the closed system the container requires a device to control solvent evaporation. With use of an automatic control valve, air may still enter the bottle as a pump moves the liquid phase out to the instrument. Vaplock solutions for closed-system solvent delivery includes both stand-alone vent control valves and built-in valved cap options.

### 2A WASTE CONTAINER FLUID CONNECTIONS

Containers to collect solvent waste vary in size and in the specific means required to convert them to closed system. By selecting an appropriate container, waste may be sealed effectively, allowing effluent tubing to drain into the container without leaks or venting, forcing exhaust fumes through a single aperture where solvent vapors may be captured before entering the laboratory. Vaplock waste collection manifolds and kits are designed to conform to a wide range of common laboratory and industrial containers, with versatile connection types and a uniquely modular system allowing reconfiguration and addition of new manifold components as required.

### 2B WASTE CONTAINER VENTILATION CONTROL

As solvents draining to waste may volatilize rapidly, the waste container can be the most significant generator of hazardous chemical vapor in an HPLC system. Available in several cartridge formats, Vaplock exhaust filters mitigate health hazards and reduce harmful chemical emissions and odors from laboratory waste containers. Developed and tested specifically for HPLC organic solvents, they may be used in conjunction with Vaplock breakthrough color indicators to determine longevity and establish a replacement schedule.

### PRICES SUBJECT TO CHANGE WITHOUT NOTICE

VapLock™ and VapCheck™ are Trademarks of Western Fluids, LLC  
 Justrite® and Centura™ are Trademarks of Justrite Manufacturing  
 Nalgene® is a Trademark of Nalge Nunc International  
 Kel-F® is a Registered Trademark of the 3M Company  
 Teflon®, Tefzel®, and Delrin® are Registered Trademarks of E.I. du Pont de Nemours and Company  
 PEEK™ polymer is a Trademark of Victrex PLC



GL45-228SI



GL45-328SI



GL45-428SI

## GL45 CAP WITH STAINLESS THREAD INSERT

### Closed System Design

Reduce chemical evaporation and exposure to hazardous vapors with Vaplock solvent reservoir caps. Combine with secure fluid connections and Vaplock air inlet or relief valves to maintain pressure equilibrium within the bottle.

### Durable Port Threads

Designed to accept industry-standard 1/4-28 threaded fittings, these caps include robust stainless steel thread inserts to minimize cross-threading and damage to soft PTFE ports. For use with semi-rigid tubing equal to or less than 1/8" (3.2mm) outside diameter.

### Anti-Twist Design

To prevent twisting of tubing when the cap is removed or attached, the inner body rotates independently of the outer collar.

### Chemically Compatible

Constructed of inert PTFE, the body of the cap provides ideal chemical compatibility with laboratory solvents. Under normal use, the outer Polypropylene collar is non-wetted. Caps may be autoclaved to 140°C. Please inquire for other material options and custom designs.

## Solvent Bottle Caps

Part #	Description	# Ports	Materials
GL45-228SI	BOTTLE CAP, GL45, (2) 1/4-28 ports with stainless steel thread inserts, PTFE with PP collar.	(2) 1/4-28	PTFE, PP, SS
GL45-328SI	BOTTLE CAP, GL45, (3) 1/4-28 ports with stainless steel thread inserts, PTFE with PP collar.	(3) 1/4-28	PTFE, PP, SS
GL45-428SI	BOTTLE CAP, GL45, (4) 1/4-28 ports with stainless steel thread inserts, PTFE with PP collar.	(4) 1/4-28	PTFE, PP, SS



GL45-228



GL45-328



GL45-428

## GL45 CAP WITH THREADED PORT

### Closed System Design

Reduce chemical evaporation and exposure to hazardous vapors with Vaplock solvent reservoir caps. Combine with secure fluid connections and Vaplock air inlet or relief valves to maintain pressure equilibrium within the bottle.

### 1/4-28 Port Threads

Designed to accept industry-standard 1/4-28 threaded fittings. For use with semi-rigid tubing equal to or less than 1/8" (3.2mm) outside diameter. Ports are angled 10° for more accessible tubing connections.

### Anti-Twist Design

To prevent twisting of tubing when the cap is removed or attached, the inner body rotates independently of the outer collar.

### Chemically Compatible

Constructed of inert PTFE, the body of the cap provides ideal chemical compatibility with laboratory solvents. Under normal use, the outer Polypropylene collar is non-wetted. Caps may be autoclaved to 140°C. Please inquire for other material options and custom designs.

## Solvent Bottle Caps

Part #	Description	# Ports	Materials
GL45-228	BOTTLE CAP, GL45, (2) 1/4-28 ports, PTFE with PP collar.	(2) 1/4-28	PTFE, PP
GL45-328	BOTTLE CAP, GL45, (3) 1/4-28 ports, PTFE with PP collar.	(3) 1/4-28	PTFE, PP
GL45-428	BOTTLE CAP, GL45, (4) 1/4-28 ports, PTFE with PP collar.	(4) 1/4-28	PTFE, PP



GL45-228FY



GL45-228E



GL45-228VB



GL45-428FY



GL45-428E



GL45-428VB

## GL45 CAP WITH INTEGRATED AIR INLET VALVE

### Closed System Design

Reduce exposure to hazardous chemical vapors with Vaplock solvent reservoir caps. Minimizing evaporation, an integrated check valve permits air to enter the bottle for vacuum displacement while solvent is pumped to the instrument. A 50µm PTFE Filter covers the valve assembly to reduce particulates.

### 1/4-28 Port Threads

Designed to accept industry-standard 1/4-28 threaded fittings. For use with semi-rigid tubing equal to or less than 1/8" (3.2mm) outside diameter.

### Anti-Twist Design

To prevent twisting of tubing when the cap is removed or attached, the inner body rotates independently of the outer collar.

### Chemically Compatible

Constructed of inert PTFE, the body of the cap provides ideal chemical compatibility with laboratory solvents. The air inlet valve is assembled with PTFE and 300-series stainless steel components, with Viton, inert FFKM, or white USP class VI EPDM seal options. Under normal use, the outer Polypropylene collar is non-wetted. Caps may be autoclaved to 140°C. Please inquire for other material options and custom designs.

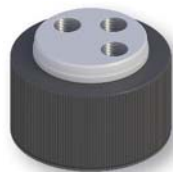
## Solvent Bottle Caps

Part #	Description	# Ports	Valve Seal Material
GL45-228FY	BOTTLE CAP, GL45, (2) 1/4-28 ports, PTFE with yellow PP collar, FFKM air inlet valve.	(2) 1/4-28	FFKM
GL45-228E	BOTTLE CAP, GL45, (2) 1/4-28 ports, PTFE with green PP collar, EPDM air inlet valve.	(2) 1/4-28	EPDM
GL45-228VB	BOTTLE CAP, GL45, (2) 1/4-28 ports, PTFE with blue PP collar, Viton air inlet valve.	(2) 1/4-28	Viton
GL45-428FY	BOTTLE CAP, GL45, (4) 1/4-28 ports, PTFE with yellow PP collar, FFKM air inlet valve.	(4) 1/4-28	FFKM
GL45-428E	BOTTLE CAP, GL45, (4) 1/4-28 ports, PTFE with green PP collar, EPDM air inlet valve.	(4) 1/4-28	EPDM
GL45-428VB	BOTTLE CAP, GL45, (4) 1/4-28 ports, PTFE with blue PP collar, Viton air inlet valve.	(4) 1/4-28	Viton

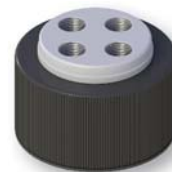




GL38-228SI



GL38-328SI



GL38-428SI

## GL38 CAP WITH STAINLESS THREAD INSERT

### Closed System Design

Reduce chemical evaporation and exposure to hazardous vapors with Vaplock solvent reservoir caps. Combine with secure fluid connections and Vaplock air inlet or relief valves to maintain pressure equilibrium within the bottle.

### Durable Port Threads

Designed to accept industry-standard 1/4-28 threaded fittings, these caps include robust stainless steel thread inserts to minimize cross-threading and damage to soft PTFE ports. For use with semi-rigid tubing equal to or less than 1/8" (3.2mm) outside diameter.

### Anti-Twist Design

To prevent twisting of tubing when the cap is removed or attached, the inner body rotates independently of the outer collar.

### Chemically Compatible

Constructed of inert PTFE, the body of the cap provides ideal chemical compatibility with laboratory solvents. Under normal use, the outer Polypropylene collar is non-wetted. Caps may be autoclaved to 140°C. Please inquire for other material options and custom designs.

## Solvent Bottle Caps

Part #	Description	# Ports	Materials
GL38-228SI	BOTTLE CAP, GL38, (2) 1/4-28 ports with stainless steel thread inserts, PTFE with PP collar.	(2) 1/4-28	PTFE, PP, SS
GL38-328SI	BOTTLE CAP, GL38, (3) 1/4-28 ports with stainless steel thread inserts, PTFE with PP collar.	(3) 1/4-28	PTFE, PP, SS
GL38-428SI	BOTTLE CAP, GL38, (4) 1/4-28 ports with stainless steel thread inserts, PTFE with PP collar.	(4) 1/4-28	PTFE, PP, SS



GL38-228



GL38-328



GL38-428

## GL38 CAP WITH THREADED PORT

### Closed System Design

Reduce chemical evaporation and exposure to hazardous vapors with Vaplock solvent reservoir caps. Combine with secure fluid connections and Vaplock air inlet or relief valves to maintain pressure equilibrium within the bottle.

### 1/4-28 Port Threads

Designed to accept industry-standard 1/4-28 threaded fittings. For use with semi-rigid tubing equal to or less than 1/8" (3.2mm) outside diameter. Ports are angled 10° for more accessible tubing connections.

### Anti-Twist Design

To prevent twisting of tubing when the cap is removed or attached, the inner body rotates independently of the outer collar.

### Chemically Compatible

Constructed of inert PTFE, the body of the cap provides ideal chemical compatibility with laboratory solvents. Under normal use, the outer Polypropylene collar is non-wetted. Caps may be autoclaved to 140°C. Please inquire for other material options and custom designs.

## Solvent Bottle Caps

Part #	Description	# Ports	Materials
GL38-228	BOTTLE CAP, GL38, (2) 1/4-28 ports, PTFE with PP collar.	(2) 1/4-28	PTFE, PP
GL38-328	BOTTLE CAP, GL38, (3) 1/4-28 ports, PTFE with PP collar.	(3) 1/4-28	PTFE, PP
GL38-428	BOTTLE CAP, GL38, (4) 1/4-28 ports, PTFE with PP collar.	(4) 1/4-28	PTFE, PP



GL38-228F



GL38-228E



GL38-228V



GL38-428F



GL38-428E



GL38-428V

## GL38 CAP WITH INTEGRATED AIR INLET VALVE

### Closed System Design

Reduce exposure to hazardous chemical vapors with Vaplock solvent reservoir caps. Minimizing evaporation, an integrated check valve permits air to enter the bottle for vacuum displacement while solvent is pumped to the instrument. A 50µm PTFE Filter covers the valve assembly to reduce particulates.

### 1/4-28 Port Threads

Designed to accept industry-standard 1/4-28 threaded fittings. For use with semi-rigid tubing equal to or less than 1/8" (3.2mm) outside diameter.

### Anti-Twist Design

To prevent twisting of tubing when the cap is removed or attached, the inner body rotates independently of the outer collar.

### Chemically Compatible

Constructed of inert PTFE, the body of the cap provides ideal chemical compatibility with laboratory solvents. The air inlet valve is assembled with PTFE and 300-series stainless steel components, with Viton, inert FFKM, or white USP class VI EPDM seal options. Under normal use, the outer Polypropylene collar is non-wetted. Caps may be autoclaved to 140°C. Please inquire for other material options and custom designs.

## Solvent Bottle Caps

Part #	Description	# Ports	Valve Seal Material
GL38-228F	BOTTLE CAP, GL38, (2) 1/4-28 ports, PTFE with PP collar, FFKM air inlet valve.	(2) 1/4-28	FFKM
GL38-228E	BOTTLE CAP, GL38, (2) 1/4-28 ports, PTFE with PP collar, EPDM air inlet valve.	(2) 1/4-28	EPDM
GL38-228V	BOTTLE CAP, GL38, (2) 1/4-28 ports, PTFE with PP collar, Viton air inlet valve.	(2) 1/4-28	Viton
GL38-428F	BOTTLE CAP, GL38, (4) 1/4-28 ports, PTFE with PP collar, FFKM air inlet valve.	(4) 1/4-28	FFKM
GL38-428E	BOTTLE CAP, GL38, (4) 1/4-28 ports, PTFE with PP collar, EPDM air inlet valve.	(4) 1/4-28	EPDM
GL38-428V	BOTTLE CAP, GL38, (4) 1/4-28 ports, PTFE with PP collar, Viton air inlet valve.	(4) 1/4-28	Viton





N38-228SI



N38-328SI



N38-428SI

## NALGENE 38-430 CAP WITH STAINLESS THREAD INSERT

### Closed System Design

Reduce chemical evaporation and exposure to hazardous vapors with Vaplock solvent reservoir caps. Combine with secure fluid connections and Vaplock air inlet or relief valves to maintain pressure equilibrium within the bottle.

### Durable Port Threads

Designed to accept industry-standard 1/4-28 threaded fittings, these caps include robust stainless steel thread inserts to minimize cross-threading and damage to soft PTFE ports. For use with semi-rigid tubing equal to or less than 1/8" (3.2mm) outside diameter.

### Anti-Twist Design

To prevent twisting of tubing when the cap is removed or attached, the inner body rotates independently of the outer collar.

### Chemically Compatible

Constructed of inert PTFE, the body of the cap provides ideal chemical compatibility with laboratory solvents. Under normal use, the outer Polypropylene collar is non-wetted. Caps may be autoclaved to 140°C. Please inquire for other material options and custom designs.

## Solvent Bottle Caps

Part #	Description	# Ports	Materials
N38-228SI	BOTTLE CAP, for Nalgene 38-430, (2) 1/4-28 ports with stainless steel thread inserts, PTFE with PP collar.	(2) 1/4-28	PTFE, PP, SS
N38-328SI	BOTTLE CAP, for Nalgene 38-430, (3) 1/4-28 ports with stainless steel thread inserts, PTFE with PP collar.	(3) 1/4-28	PTFE, PP, SS
N38-428SI	BOTTLE CAP, for Nalgene 38-430, (4) 1/4-28 ports with stainless steel thread inserts, PTFE with PP collar.	(4) 1/4-28	PTFE, PP, SS



N38-228



N38-328



N38-428

## NALGENE 38-430 CAP WITH THREADED PORT

### Closed System Design

Reduce chemical evaporation and exposure to hazardous vapors with Vaplock solvent reservoir caps. Combine with secure fluid connections and Vaplock air inlet or relief valves to maintain pressure equilibrium within the bottle.

### 1/4-28 Port Threads

Designed to accept industry-standard 1/4-28 threaded fittings. For use with semi-rigid tubing equal to or less than 1/8" (3.2mm) outside diameter. Ports are angled 10° for more accessible tubing connections.

### Anti-Twist Design

To prevent twisting of tubing when the cap is removed or attached, the inner body rotates independently of the outer collar.

### Chemically Compatible

Constructed of inert PTFE, the body of the cap provides ideal chemical compatibility with laboratory solvents. Under normal use, the outer Polypropylene collar is non-wetted. Caps may be autoclaved to 140°C. Please inquire for other material options and custom designs.

## Solvent Bottle Caps

Part #	Description	# Ports	Materials
N38-228	BOTTLE CAP, for Nalgene 38-430, (2) 1/4-28 ports, PTFE with PP collar.	(2) 1/4-28	PTFE, PP
N38-328	BOTTLE CAP, for Nalgene 38-430, (3) 1/4-28 ports, PTFE with PP collar.	(3) 1/4-28	PTFE, PP
N38-428	BOTTLE CAP, for Nalgene 38-430, (4) 1/4-28 ports, PTFE with PP collar.	(4) 1/4-28	PTFE, PP



N38-228F



N38-228E



N38-228V



N38-428F



N38-428E



N38-428V

## NALGENE 38-430 WITH INTEGRATED AIR INLET VALVE

### Closed System Design

Reduce exposure to hazardous chemical vapors with Vaplock solvent reservoir caps. Minimizing evaporation, an integrated check valve permits air to enter the bottle for vacuum displacement while solvent is pumped to the instrument. A 50µm PTFE Filter covers the valve assembly to reduce particulates.

### 1/4-28 Port Threads

Designed to accept industry-standard 1/4-28 threaded fittings. For use with semi-rigid tubing equal to or less than 1/8" (3.2mm) outside diameter.

### Anti-Twist Design

To prevent twisting of tubing when the cap is removed or attached, the inner body rotates independently of the outer collar.

### Chemically Compatible

Constructed of inert PTFE, the body of the cap provides ideal chemical compatibility with laboratory solvents. The air inlet valve is assembled with PTFE and 300-series stainless steel components, with Viton, inert FFKM, or white USP class VI EPDM seal options. Under normal use, the outer Polypropylene collar is non-wetted. Caps may be autoclaved to 140°C. Please inquire for other material options and custom designs.

### Solvent Bottle Caps

Part #	Description	# Ports	Valve Seal Material
N38-228F	BOTTLE CAP, for Nalgene 38-430, (2) 1/4-28 ports, PTFE with PP collar, FFKM air inlet valve.	(2) 1/4-28	FFKM
N38-228E	BOTTLE CAP, for Nalgene 38-430, (2) 1/4-28 ports, PTFE with PP collar, EPDM air inlet valve.	(2) 1/4-28	EPDM
N38-228V	BOTTLE CAP, for Nalgene 38-430, (2) 1/4-28 ports, PTFE with PP collar, Viton air inlet valve.	(2) 1/4-28	Viton
N38-428F	BOTTLE CAP, for Nalgene 38-430, (4) 1/4-28 ports, PTFE with PP collar, FFKM air inlet valve.	(4) 1/4-28	FFKM
N38-428E	BOTTLE CAP, for Nalgene 38-430, (4) 1/4-28 ports, PTFE with PP collar, EPDM air inlet valve.	(4) 1/4-28	EPDM
N38-428V	BOTTLE CAP, for Nalgene 38-430, (4) 1/4-28 ports, PTFE with PP collar, Viton air inlet valve.	(4) 1/4-28	Viton



W38-228SI



W38-328SI



W38-428SI

## 38mm-WAKO CAP WITH STAINLESS THREAD INSERT

### Closed System Design

Reduce chemical evaporation and exposure to hazardous vapors with Vaplock solvent reservoir caps. Combine with secure fluid connections and Vaplock air inlet or relief valves to maintain pressure equilibrium within the bottle.

### Durable Port Threads

Designed to accept industry-standard 1/4-28 threaded fittings, these caps include robust stainless steel thread inserts to minimize cross-threading and damage to soft PTFE ports. For use with semi-rigid tubing equal to or less than 1/8" (3.2mm) outside diameter.

### Anti-Twist Design

To prevent twisting of tubing when the cap is removed or attached, the inner body rotates independently of the outer collar.

### Chemically Compatible

Constructed of inert PTFE, the body of the cap provides ideal chemical compatibility with laboratory solvents. Under normal use, the outer Polypropylene collar is non-wetted. Caps may be autoclaved to 140°C. Please inquire for other material options and custom designs.

## Solvent Bottle Caps

Part #	Description	# Ports	Materials
W38-228SI	BOTTLE CAP, for Wako 38mm, (2) 1/4-28 ports with stainless steel thread inserts, PTFE with PP collar.	(2) 1/4-28	PTFE, PP, SS
W38-328SI	BOTTLE CAP, for Wako 38mm, (3) 1/4-28 ports with stainless steel thread inserts, PTFE with PP collar.	(3) 1/4-28	PTFE, PP, SS
W38-428SI	BOTTLE CAP, for Wako 38mm, (4) 1/4-28 ports with stainless steel thread inserts, PTFE with PP collar.	(4) 1/4-28	PTFE, PP, SS



W38-228



W38-328



W38-428

## 38mm-WAKO CAP WITH THREADED PORT

### Closed System Design

Reduce chemical evaporation and exposure to hazardous vapors with Vaplock solvent reservoir caps. Combine with secure fluid connections and Vaplock air inlet or relief valves to maintain pressure equilibrium within the bottle.

### 1/4-28 Port Threads

Designed to accept industry-standard 1/4-28 threaded fittings. For use with semi-rigid tubing equal to or less than 1/8" (3.2mm) outside diameter. Ports are angled 10° for more accessible tubing connections.

### Anti-Twist Design

To prevent twisting of tubing when the cap is removed or attached, the inner body rotates independently of the outer collar.

### Chemically Compatible

Constructed of inert PTFE, the body of the cap provides ideal chemical compatibility with laboratory solvents. Under normal use, the outer Polypropylene collar is non-wetted. Caps may be autoclaved to 140°C. Please inquire for other material options and custom designs.

## Solvent Bottle Caps

Part #	Description	# Ports	Materials
W38-228	BOTTLE CAP, for Wako 38mm, (2) 1/4-28 ports, PTFE with PP collar.	(2) 1/4-28	PTFE, PP
W38-328	BOTTLE CAP, for Wako 38mm, (3) 1/4-28 ports, PTFE with PP collar.	(3) 1/4-28	PTFE, PP
W38-428	BOTTLE CAP, for Wako 38mm, (4) 1/4-28 ports, PTFE with PP collar.	(4) 1/4-28	PTFE, PP



W38-228F



W38-228E



W38-228V



W38-428F



W38-428E



W38-428V

## 38mm-WAKO WITH INTEGRATED AIR INLET VALVE

### Closed System Design

Reduce exposure to hazardous chemical vapors with Vaplock solvent reservoir caps. Minimizing evaporation, an integrated check valve permits air to enter the bottle for vacuum displacement while solvent is pumped to the instrument. A 50µm PTFE Filter covers the valve assembly to reduce particulates.

### 1/4-28 Port Threads

Designed to accept industry-standard 1/4-28 threaded fittings. For use with semi-rigid tubing equal to or less than 1/8" (3.2mm) outside diameter.

### Anti-Twist Design

To prevent twisting of tubing when the cap is removed or attached, the inner body rotates independently of the outer collar.

### Chemically Compatible

Constructed of inert PTFE, the body of the cap provides ideal chemical compatibility with laboratory solvents. The air inlet valve is assembled with PTFE and 300-series stainless steel components, with Viton, inert FFKM, or white USP class VI EPDM seal options. Under normal use, the outer Polypropylene collar is non-wetted. Caps may be autoclaved to 140°C. Please inquire for other material options and custom designs.

## Solvent Bottle Caps

Part #	Description	# Ports	Valve Seal Material
W38-228F	BOTTLE CAP, for Wako 38mm, (2) 1/4-28 ports, PTFE with PP collar, FFKM air inlet valve.	(2) 1/4-28	FFKM
W38-228E	BOTTLE CAP, for Wako 38mm, (2) 1/4-28 ports, PTFE with PP collar, EPDM air inlet valve.	(2) 1/4-28	EPDM
W38-228V	BOTTLE CAP, for Wako 38mm, (2) 1/4-28 ports, PTFE with PP collar, Viton air inlet valve.	(2) 1/4-28	Viton
W38-428F	BOTTLE CAP, for Wako 38mm, (4) 1/4-28 ports, PTFE with PP collar, FFKM air inlet valve.	(4) 1/4-28	FFKM
W38-428E	BOTTLE CAP, for Wako 38mm, (4) 1/4-28 ports, PTFE with PP collar, EPDM air inlet valve.	(4) 1/4-28	EPDM
W38-428V	BOTTLE CAP, for Wako 38mm, (4) 1/4-28 ports, PTFE with PP collar, Viton air inlet valve.	(4) 1/4-28	Viton





GL32-228SI



GL32-328SI



GL32-428SI

## GL32 CAP WITH STAINLESS THREAD INSERT

### Closed System Design

Reduce chemical evaporation and exposure to hazardous vapors with Vaplock solvent reservoir caps. Combine with secure fluid connections and Vaplock air inlet or relief valves to maintain pressure equilibrium within the bottle.

### Durable Port Threads

Designed to accept industry-standard 1/4-28 threaded fittings, these caps include robust stainless steel thread inserts to minimize cross-threading and damage to soft PTFE ports. For use with semi-rigid tubing equal to or less than 1/8" (3.2mm) outside diameter.

### Anti-Twist Design

To prevent twisting of tubing when the cap is removed or attached, the inner body rotates independently of the outer collar.

### Chemically Compatible

Constructed of inert PTFE, the body of the cap provides ideal chemical compatibility with laboratory solvents. Under normal use, the outer Polypropylene collar is non-wetted. Caps may be autoclaved to 140°C. Please inquire for other material options and custom designs.

## Solvent Bottle Caps

Part #	Description	# Ports	Materials
GL32-228SI	BOTTLE CAP, GL32, (2) 1/4-28 ports with stainless steel thread inserts, PTFE with PP collar.	(2) 1/4-28	PTFE, PP, SS
GL32-328SI	BOTTLE CAP, GL32, (3) 1/4-28 ports with stainless steel thread inserts, PTFE with PP collar.	(3) 1/4-28	PTFE, PP, SS
GL32-428SI	BOTTLE CAP, GL32, (4) 1/4-28 ports with stainless steel thread inserts, PTFE with PP collar.	(4) 1/4-28	PTFE, PP, SS



GL32-228



GL32-328



GL32-428

## GL32 CAP WITH THREADED PORT

### Closed System Design

Reduce chemical evaporation and exposure to hazardous vapors with Vaplock solvent reservoir caps. Combine with secure fluid connections and Vaplock air inlet or relief valves to maintain pressure equilibrium within the bottle.

### 1/4-28 Port Threads

Designed to accept industry-standard 1/4-28 threaded fittings. For use with semi-rigid tubing equal to or less than 1/8" (3.2mm) outside diameter. Ports are angled 10° for more accessible tubing connections.

### Anti-Twist Design

To prevent twisting of tubing when the cap is removed or attached, the inner body rotates independently of the outer collar.

### Chemically Compatible

Constructed of inert PTFE, the body of the cap provides ideal chemical compatibility with laboratory solvents. Under normal use, the outer Polypropylene collar is non-wetted. Caps may be autoclaved to 140°C. Please inquire for other material options and custom designs.

## Solvent Bottle Caps

Part #	Description	# Ports	Materials
GL32-228	BOTTLE CAP, GL32, (2) 1/4-28 ports, PTFE with PP collar.	(2) 1/4-28	PTFE, PP
GL32-328	BOTTLE CAP, GL32, (3) 1/4-28 ports, PTFE with PP collar.	(3) 1/4-28	PTFE, PP
GL32-428	BOTTLE CAP, GL32, (4) 1/4-28 ports, PTFE with PP collar.	(4) 1/4-28	PTFE, PP



GL25-228



GL25-328

## GL25 CAP WITH THREADED PORT

### Closed System Design

Reduce chemical evaporation and exposure to hazardous vapors with Vaplock solvent reservoir caps. Combine with secure fluid connections and Vaplock air inlet or relief valves to maintain pressure equilibrium within the bottle.

### 1/4-28 Port Threads

Designed to accept industry-standard 1/4-28 threaded fittings. For use with semi-rigid tubing equal to or less than 1/8" (3.2mm) outside diameter. Ports are angled 10° for more accessible tubing connections.

### Anti-Twist Design

To prevent twisting of tubing when the cap is removed or attached, the inner body rotates independently of the outer collar.

### Chemically Compatible

Constructed of inert PTFE, the body of the cap provides ideal chemical compatibility with laboratory solvents. Under normal use, the outer Polypropylene collar is non-wetted. Caps may be autoclaved to 140°C. Please inquire for other material options and custom designs.

## Solvent Bottle Caps

Part #	Description	# Ports	Materials
GL25-228	BOTTLE CAP, GL25, (2) 1/4-28 ports, PTFE with PP collar.	(2) 1/4-28	PTFE, PP
GL25-328	BOTTLE CAP, GL25, (3) 1/4-28 ports, PTFE with PP collar.	(3) 1/4-28	PTFE, PP



MPGL38-10

## GL38 WASTE CAPS

### Vapor Tight Connection

Waste manifolds are designed to fit standard GL38 threaded lab bottles.

### Chemical Resistance

Materials of construction include your choice of Polypropylene or PTFE manifold and insert with Polypropylene spin collar.

### Versatile Configuration

Manifolds can be configured for barbed connections, compression fittings, 1/4-28 fitting and ferrule sets. All manifolds are designed to accommodate our CF-100 Filter and indicator.

\*See the emissions filter section of our catalog



MPGL38-4

### Manifold Caps

Part #	Description	# Ports	Manifold Material
MPGL38-4	WASTE MANIFOLD for GL38 threaded container, 4-port with (3) 1/4" NPT, (1) 1/2" NPT, Polypropylene	(3) 1/4 NPT (1) 1/2 NPT	PP
MTGL38-4	WASTE MANIFOLD for GL38 threaded container, 4-port with (3) 1/4" NPT, (1) 1/2" NPT, PTFE	(3) 1/4 NPT (1) 1/2 NPT	PTFE
MPGL38-10	WASTE MANIFOLD for GL38 threaded container, 10-port with (1) 1/2" NPT, (3) 1/4" NPT, (6) 1/4-28, Polypropylene	(1) 1/2 NPT (3) 1/4 NPT (6) 1/4-28	PP
MTGL38-10	WASTE MANIFOLD for GL38 threaded container, 10-port with (3) 1/4" NPT, (6) 1/4-28, PTFE	(1) 1/2 NPT, (3) 1/4 NPT, (6) 1/4-28	PTFE

## GL38 WASTE KITS

VAPLOCK™ Closed Systems for solvent containment minimizes leaks, spills, and vapor escape from solvent waste and supply containers. Use Vaplock™ kits to provide an effective means of sealed solvent delivery, and select from waste containment kits to collect effluents while minimizing harmful solvent exhaust. All Vaplock™ products are designed for ease of use and adaptability, and will conform to a broad range of standard laboratory solvent containers. Waste Accessory Kits include a solvent collection manifold, an organic solvent exhaust filter with breakthrough indicator, and adapters, plugs, and tubing connections required for installation on typical HPLC instruments.

- Minimize exposure to harmful chemical vapors
- Collect solvent waste from multiple effluent streams
- Highly adaptable and conforms to a broad range of containment types

### Kit Contents

10-port Waste Manifold  
 (3) 1/4" NPT Polypropylene Plugs  
 (6) 1/4-28 PTFE Plugs  
 (1) 1/2 NPT Polypropylene Plug  
 (1) Organic Vapor Filter  
 (2) 2.2mm OD hard wall tubing connections  
 (1) 2.5mm OD hard wall tubing connection  
 (3) 1/8" OD hard wall tubing connections  
 (2) 1/16" OD hard wall tubing connections  
 (3) BARBED TUBING CONNECTION 1/4 ID tubing x 1/4 NPT Polypropylene  
 (1) BARBED TUBING CONNECTION 1/8 ID tubing x 1/4 NPT Polypropylene  
 (1) BARBED TUBING CONNECTION 3/16 ID tubing x 1/4 NPT Polypropylene  
 (1) BARBED TUBING CONNECTION 3/8 ID tubing x 1/4 NPT Polypropylene  
 (1) BARB TO BARB Y CONNECTOR with 1/4" (6.25mm) Barbs, Polypropylene  
 (1) HARDWALL TUBE EXTENSION includes union connections and 5 feet 1/8 OD PTFE tubing  
 (1) FILTER ADAPTER 1/4 NPT x 1/2 NPT polypropylene  
 (1) BREAKTHROUGH COLOR INDICATOR for Vaplock™ organic vapor filter  
 Container Not Included.



Part #	Description	# Ports	Manifold Material
MPGL38-10K	HPLC WASTE ACCESSORY KIT for GL38 threaded container, 10-port with (1) 1/2" NPT, (3) 1/4" NPT, (6) 1/4-28; includes Polypropylene Manifold, Fittings Kit, Exhaust Filter with adapter and color indicator	(1) 1/2 NPT, (3) 1/4 NPT, (6) 1/4-28	PP
MTGL38-10K	HPLC WASTE ACCESSORY KIT for GL38 threaded container, 10-port with (1) 1/2" NPT, (3) 1/4" NPT, (6) 1/4-28; includes PTFE Manifold, Fittings Kit, Exhaust Filter with adapter and color indicator	(1) 1/2 NPT, (3) 1/4 NPT, (6) 1/4-28	PTFE

## Waste Kits



MPN38-10



MPN38-4

## NALGENE 38-430 WASTE CAPS

### Vapor Tight Connection

Waste manifolds are designed to fit standard plastic 38-430 threaded lab bottles.

### Chemical Resistance

Materials of construction include your choice of Polypropylene or PTFE manifold and insert with Polypropylene spin collar.

### Versatile Configuration

Manifolds can be configured for barbed connections, compression fittings, 1/4-28 fitting and ferrule sets. All manifolds are designed to accommodate our CF-100 Filter and indicator.

\*See the emissions filter section of our catalog

### Manifold Caps

Part #	Description	# Ports	Manifold Material
MPN38-4	WASTE MANIFOLD for Nalgene 38-430 threaded container, 4-port with (3) 1/4" NPT, (1) 1/2" NPT, Polypropylene	(3) 1/4 NPT (1) 1/2 NPT	PP
MTN38-4	WASTE MANIFOLD for Nalgene 38-430 threaded container, 4-port with (3) 1/4" NPT, (1) 1/2" NPT, PTFE	(3) 1/4 NPT (1) 1/2 NPT	PTFE
MPN38-10	WASTE MANIFOLD for Nalgene 38-430 threaded container, 10-port with (1) 1/2" NPT, (3) 1/4" NPT, (6) 1/4-28, Polypropylene	(1) 1/2 NPT, (3) 1/4 NPT, (6) 1/4-28	PP
MTN38-10	WASTE MANIFOLD for Nalgene 38-430 threaded container, 10-port with (1) 1/2" NPT, (3) 1/4" NPT, (6) 1/4-28, PTFE	(1) 1/2 NPT, (3) 1/4 NPT, (6) 1/4-28	PTFE



## NALGENE 38-430 WASTE KITS

VAPLOCK™ Closed Systems for solvent containment minimizes leaks, spills, and vapor escape from solvent waste and supply containers. Use Vaplock™ kits to provide an effective means of sealed solvent delivery, and select from waste containment kits to collect effluents while minimizing harmful solvent exhaust. All Vaplock™ products are designed for ease of use and adaptability, and will conform to a broad range of standard laboratory solvent containers. Waste Accessory Kits include a solvent collection manifold, an organic solvent exhaust filter with breakthrough indicator, and adapters, plugs, and tubing connections required for installation on typical HPLC instruments.

- Minimize exposure to harmful chemical vapors
- Collect solvent waste from multiple effluent streams
- Highly adaptable and conforms to a broad range of containment types

### Kit Contents

- 10-port Waste Manifold
- (3) 1/4" NPT Polypropylene Plugs
- (6) 1/4-28 PTFE Plugs
- (1) 1/2 NPT Polypropylene Plug
- (1) Organic Vapor Filter
- (2) 2.2mm OD hard wall tubing connections
- (1) 2.5mm OD hard wall tubing connection
- (3) 1/8" OD hard wall tubing connections
- (2) 1/16" OD hard wall tubing connections
- (3) BARBED TUBING CONNECTION 1/4 ID tubing x 1/4 NPT Polypropylene
- (1) BARBED TUBING CONNECTION 1/8 ID tubing x 1/4 NPT Polypropylene
- (1) BARBED TUBING CONNECTION 3/16 ID tubing x 1/4 NPT Polypropylene
- (1) BARBED TUBING CONNECTION 3/8 ID tubing x 1/4 NPT Polypropylene
- (1) BARB TO BARB Y CONNECTOR with 1/4" (6.25mm) Barbs, Polypropylene
- (1) HARDWALL TUBE EXTENSION includes union connections and 5 feet 1/8 OD PTFE tubing
- (1) FILTER ADAPTER 1/4 NPT x 1/2 NPT polypropylene
- (1) BREAKTHROUGH COLOR INDICATOR for Vaplock™ organic vapor filter

Container Not Included.



Part #	Description	# Ports	Manifold Material
MPN38-10K	HPLC WASTE ACCESSORY KIT for Nalgene 38-430 threaded container, 10-port with (1) 1/2" NPT, (3) 1/4" NPT, (6) 1/4-28; includes Polypropylene Manifold, Fittings Kit, Exhaust Filter with adapter and color indicator	(1) 1/2 NPT, (3) 1/4 NPT, (6) 1/4-28	PP
MTN38-10K	HPLC WASTE ACCESSORY KIT for Nalgene 38-430 threaded container, 10-port with (1) 1/2" NPT, (3) 1/4" NPT, (6) 1/4-28; includes PTFE Manifold, Fittings Kit, Exhaust Filter with adapter and color indicator	(1) 1/2 NPT, (3) 1/4 NPT, (6) 1/4-28	PTFE

### Waste Kits



MPW38-10



MPW38-4

## WAKO 38mm WASTE CAPS

### Vapor Tight Connection

Waste manifolds are designed to fit Wako 38mm threaded lab bottles.

### Chemical Resistance

Materials of construction include your choice of Polypropylene or PTFE manifold and insert with Polypropylene spin collar.

### Versatile Configuration

Manifolds can be configured for barbed connections, compression fittings, 1/4-28 fitting and ferrule sets. All manifolds are designed to accommodate our CF-100 Filter and indicator.

\*See the emissions filter section of our catalog

## Manifold Caps

Part #	Description	# Ports	Manifold Material
MPW38-4	WASTE MANIFOLD for Wako 38mm threaded container, 4-port with (3) 1/4" NPT, (1) 1/2" NPT, Polypropylene	(3) 1/4 NPT (1) 1/2 NPT	PP
MTW38-4	WASTE MANIFOLD for Wako 38mm threaded container, 4-port with (3) 1/4" NPT, (1) 1/2" NPT, PTFE	(3) 1/4 NPT (1) 1/2 NPT	PTFE
MPW38-10	WASTE MANIFOLD for Wako 38mm threaded container, 10-port with (1) 1/2" NPT, (3) 1/4" NPT, (6) 1/4-28, Polypropylene	(1) 1/2 NPT, (3) 1/4 NPT, (6) 1/4-28	PP
MTW38-10	WASTE MANIFOLD for Wako 38mm threaded container, 10-port with (1) 1/2" NPT, (3) 1/4" NPT, (6) 1/4-28, PTFE	(1) 1/2 NPT, (3) 1/4 NPT, (6) 1/4-28	PTFE

## WAKO 38mm WASTE KITS

VAPLOCK™ Closed Systems for solvent containment minimizes leaks, spills, and vapor escape from solvent waste and supply containers. Use Vaplock™ kits to provide an effective means of sealed solvent delivery, and select from waste containment kits to collect effluents while minimizing harmful solvent exhaust. All Vaplock™ products are designed for ease of use and adaptability, and will conform to a broad range of standard laboratory solvent containers. Waste Accessory Kits include a solvent collection manifold, an organic solvent exhaust filter with breakthrough indicator, and adapters, plugs, and tubing connections required for installation on typical HPLC instruments.

- Minimize exposure to harmful chemical vapors
- Collect solvent waste from multiple effluent streams
- Highly adaptable and conforms to a broad range of containment types

### Kit Contents

- 10-port Waste Manifold
- (3) 1/4" NPT Polypropylene Plugs
- (6) 1/4-28 PTFE Plugs
- (1) 1/2 NPT Polypropylene Plug
- (1) Organic Vapor Filter
- (2) 2.2mm OD hard wall tubing connections
- (1) 2.5mm OD hard wall tubing connection
- (3) 1/8" OD hard wall tubing connections
- (2) 1/16" OD hard wall tubing connections
- (3) BARBED TUBING CONNECTION 1/4 ID tubing x 1/4 NPT Polypropylene
- (1) BARBED TUBING CONNECTION 1/8 ID tubing x 1/4 NPT Polypropylene
- (1) BARBED TUBING CONNECTION 3/16 ID tubing x 1/4 NPT Polypropylene
- (1) BARBED TUBING CONNECTION 3/8 ID tubing x 1/4 NPT Polypropylene
- (1) BARB TO BARB Y CONNECTOR with 1/4" (6.25mm) Barbs, Polypropylene
- (1) HARDWALL TUBE EXTENSION includes union connections and 5 feet 1/8 OD PTFE tubing
- (1) FILTER ADAPTER 1/4 NPT x 1/2 NPT polypropylene
- (1) BREAKTHROUGH COLOR INDICATOR for Vaplock™ organic vapor filter

Container Not Included.



Part #	Description	# Ports	Manifold Material
MPW38-10K	HPLC WASTE ACCESSORY KIT for Wako 38mm threaded container, 10-port with (1) 1/2" NPT, (3) 1/4" NPT, (6) 1/4-28; includes Polypropylene Manifold, Fittings Kit, Exhaust Filter with adapter and color indicator	(1) 1/2 NPT, (3) 1/4 NPT, (6) 1/4-28	PP
MTW38-10K	HPLC WASTE ACCESSORY KIT for Wako 38mm threaded container, 10-port with (1) 1/2" NPT, (3) 1/4" NPT, (6) 1/4-28; includes PTFE Manifold, Fittings Kit, Exhaust Filter with adapter and color indicator	(1) 1/2 NPT, (3) 1/4 NPT, (6) 1/4-28	PTFE

### Waste Kits



MPGL45-10



MPGL45-4

## GL45 WASTE CAPS

### Vapor Tight Connection

Waste manifolds are designed to fit standard GL45 threaded lab bottles.

### Chemical Resistance

Materials of construction include your choice of Polypropylene or PTFE manifold and insert with Polypropylene spin collar.

### Versatile Configuration

Manifolds can be configured for barbed connections, compression fittings, 1/4-28 fitting and ferrule sets. All manifolds are designed to accommodate our CF-100 Filter and indicator.

\*See the emissions filter section of our catalog

## Manifold Caps

Part #	Description	# Ports	Manifold Material
MPGL45-4	WASTE MANIFOLD for GL45 threaded container, 4-port with (3) 1/4" NPT, (1) 1/2" NPT, Polypropylene	(3) 1/4 NPT (1) 1/2 NPT	PP
MTGL45-4	WASTE MANIFOLD for GL45 threaded container, 4-port with (3) 1/4" NPT, (1) 1/2" NPT, PTFE	(3) 1/4 NPT (1) 1/2 NPT	PTFE
MPGL45-10	WASTE MANIFOLD for GL45 threaded container, 10-port with (1) 1/2" NPT, (3) 1/4" NPT, (6) 1/4-28, Polypropylene	(1) 1/2 NPT, (3) 1/4 NPT, (6) 1/4-28	PP
MTGL45-10	WASTE MANIFOLD for GL45 threaded container, 10-port with (1) 1/2" NPT, (3) 1/4" NPT, (6) 1/4-28, PTFE	(1) 1/2 NPT, (3) 1/4 NPT, (6) 1/4-28	PTFE

## GL45 WASTE KITS

VAPLOCK™ Closed Systems for solvent containment minimizes leaks, spills, and vapor escape from solvent waste and supply containers. Use Vaplock™ kits to provide an effective means of sealed solvent delivery, and select from waste containment kits to collect effluents while minimizing harmful solvent exhaust. All Vaplock™ products are designed for ease of use and adaptability, and will conform to a broad range of standard laboratory solvent containers. Waste Accessory Kits include a solvent collection manifold, an organic solvent exhaust filter with breakthrough indicator, and adapters, plugs, and tubing connections required for installation on typical HPLC instruments.

- Minimize exposure to harmful chemical vapors
- Collect solvent waste from multiple effluent streams
- Highly adaptable and conforms to a broad range of containment types

### Kit Contents

- 10-port Waste Manifold
- (3) 1/4" NPT Polypropylene Plugs
- (6) 1/4-28 PTFE Plugs
- (1) 1/2 NPT Polypropylene Plug
- (1) Organic Vapor Filter
- (2) 2.2mm OD hard wall tubing connections
- (1) 2.5mm OD hard wall tubing connection
- (3) 1/8" OD hard wall tubing connections
- (2) 1/16" OD hard wall tubing connections
- (3) BARBED TUBING CONNECTION 1/4 ID tubing x 1/4 NPT Polypropylene
- (1) BARBED TUBING CONNECTION 1/8 ID tubing x 1/4 NPT Polypropylene
- (1) BARBED TUBING CONNECTION 3/16 ID tubing x 1/4 NPT Polypropylene
- (1) BARBED TUBING CONNECTION 3/8 ID tubing x 1/4 NPT Polypropylene
- (1) BARB TO BARB Y CONNECTOR with 1/4" (6.25mm) Barbs, Polypropylene
- (1) HARDWALL TUBE EXTENSION includes union connections and 5 feet 1/8 OD PTFE tubing
- (1) FILTER ADAPTER 1/4 NPT x 1/2 NPT polypropylene
- (1) BREAKTHROUGH COLOR INDICATOR for Vaplock™ organic vapor filter

Container Not Included.



Part #	Description	# Ports	Manifold Material
MPGL45-10K	HPLC WASTE ACCESSORY KIT for GL45 threaded container, 10-port with (1) 1/2" NPT, (3) 1/4" NPT, (6) 1/4-28; includes Polypropylene Manifold, Fittings Kit, Exhaust Filter with adapter and color indicator	(1) 1/2 NPT, (3) 1/4 NPT, (6) 1/4-28	PP
MTGL45-10K	HPLC WASTE ACCESSORY KIT for GL45 threaded container, 10-port with (1) 1/2" NPT, (3) 1/4" NPT, (6) 1/4-28; includes PTFE Manifold, Fittings Kit, Exhaust Filter with adapter and color indicator	(1) 1/2 NPT, (3) 1/4 NPT, (6) 1/4-28	PTFE

## Waste Kits





MPD45-10



MPD45-4

## DIN 45 WASTE CAPS

### Vapor Tight Connection

Waste manifolds are designed to fit standard DIN 45 threaded lab bottles.

### Chemical Resistance

Materials of construction include your choice of Polypropylene or PTFE manifold and insert with HDPE spin collar.

### Versatile Configuration

Manifolds can be configured for barbed connections, compression fittings, 1/4-28 fitting and ferrule sets. All manifolds are designed to accommodate our CF-100 Filter and indicator.

\*See the emissions filter section of our catalog

## Manifold Caps

Part #	Description	# Ports	Manifold Material
MPD45-4	WASTE MANIFOLD for DIN 45 threaded container, 4-port with (3) 1/4" NPT, (1) 1/2" NPT, Polypropylene	(3) 1/4 NPT (1) 1/2 NPT	PP
MTD45-4	WASTE MANIFOLD for DIN 45 threaded container, 4-port with (3) 1/4" NPT, (1) 1/2" NPT, PTFE	(3) 1/4 NPT (1) 1/2 NPT	PTFE
MPD45-10	WASTE MANIFOLD for DIN 45 threaded container, 10-port with (1) 1/2" NPT, (3) 1/4" NPT, (6) 1/4-28, Polypropylene	(1) 1/2 NPT, (3) 1/4 NPT, (6) 1/4-28	PP
MTD45-10	WASTE MANIFOLD for DIN 45 threaded container, 10-port with (1) 1/2" NPT, (3) 1/4" NPT, (6) 1/4-28, PTFE	(1) 1/2 NPT, (3) 1/4 NPT, (6) 1/4-28	PTFE



## DIN 45 WASTE KITS

VAPLOCK™ Closed Systems for solvent containment minimizes leaks, spills, and vapor escape from solvent waste and supply containers. Use Vaplock™ kits to provide an effective means of sealed solvent delivery, and select from waste containment kits to collect effluents while minimizing harmful solvent exhaust. All Vaplock™ products are designed for ease of use and adaptability, and will conform to a broad range of standard laboratory solvent containers. Waste Accessory Kits include a solvent collection manifold, an organic solvent exhaust filter with breakthrough indicator, and adapters, plugs, and tubing connections required for installation on typical HPLC instruments.

- Minimize exposure to harmful chemical vapors
- Collect solvent waste from multiple effluent streams
- Highly adaptable and conforms to a broad range of containment types

### Kit Contents

- 10-port Waste Manifold
- (3) 1/4" NPT Polypropylene Plugs
- (6) 1/4-28 PTFE Plugs
- (1) 1/2 NPT Polypropylene Plug
- (1) Organic Vapor Filter
- (2) 2.2mm OD hard wall tubing connections
- (1) 2.5mm OD hard wall tubing connection
- (3) 1/8" OD hard wall tubing connections
- (2) 1/16" OD hard wall tubing connections
- (3) BARBED TUBING CONNECTION 1/4 ID tubing x 1/4 NPT Polypropylene
- (1) BARBED TUBING CONNECTION 1/8 ID tubing x 1/4 NPT Polypropylene
- (1) BARBED TUBING CONNECTION 3/16 ID tubing x 1/4 NPT Polypropylene
- (1) BARBED TUBING CONNECTION 3/8 ID tubing x 1/4 NPT Polypropylene
- (1) BARB TO BARB Y CONNECTOR with 1/4" (6.25mm) Barbs, Polypropylene
- (1) HARDWALL TUBE EXTENSION includes union connections and 5 feet 1/8 OD PTFE tubing
- (1) FILTER ADAPTER 1/4 NPT x 1/2 NPT polypropylene
- (1) BREAKTHROUGH COLOR INDICATOR for Vaplock™ organic vapor filter

Container Not Included.



MPD45-10K

Part #	Description	# Ports	Manifold Material
MPD45-10K	HPLC WASTE ACCESSORY KIT for DIN 45 threaded container, 10-port with (1) 1/2" NPT, (3) 1/4" NPT, (6) 1/4-28; includes Polypropylene Manifold, Fittings Kit, Exhaust Filter with adapter and color indicator	(1) 1/2 NPT, (3) 1/4 NPT, (6) 1/4-28	PP
MTD45-10K	HPLC WASTE ACCESSORY KIT for DIN 45 threaded container, 10-port with (1) 1/2" NPT, (3) 1/4" NPT, (6) 1/4-28; includes PTFE Manifold, Fittings Kit, Exhaust Filter with adapter and color indicator	(1) 1/2 NPT, (3) 1/4 NPT, (6) 1/4-28	PTFE

### Waste Kits



MPD50-10



MPD50-4

## DIN 50 WASTE CAPS

### Vapor Tight Connection

Waste manifolds are designed to fit standard DIN 50 threaded lab bottles.

### Chemical Resistance

Materials of construction include your choice of Polypropylene or PTFE manifold and insert with HDPE spin collar.

### Versatile Configuration

Manifolds can be configured for barbed connections, compression fittings, 1/4-28 fitting and ferrule sets. All manifolds are designed to accommodate our CF-100 Filter and indicator.

\*See the emissions filter section of our catalog

## Manifold Caps

Part #	Description	# Ports	Manifold Material
MPD50-4	WASTE MANIFOLD for DIN 50 threaded container, 4-port with (3) 1/4" NPT, (1) 1/2" NPT, Polypropylene	(3) 1/4 NPT (1) 1/2 NPT	PP
MTD50-4	WASTE MANIFOLD for DIN 50 threaded container, 4-port with (3) 1/4" NPT, (1) 1/2" NPT, PTFE	(3) 1/4 NPT (1) 1/2 NPT	PTFE
MPD50-10	WASTE MANIFOLD for DIN 50 threaded container, 10-port with (1) 1/2" NPT, (3) 1/4" NPT, (6) 1/4-28, Polypropylene	(1) 1/2 NPT, (3) 1/4 NPT, (6) 1/4-28	PP
MTD50-10	WASTE MANIFOLD for DIN 50 threaded container, 10-port with (1) 1/2" NPT, (3) 1/4" NPT, (6) 1/4-28, PTFE	(1) 1/2 NPT, (3) 1/4 NPT, (6) 1/4-28	PTFE

## DIN 50 WASTE KITS

VAPLOCK™ Closed Systems for solvent containment minimizes leaks, spills, and vapor escape from solvent waste and supply containers. Use Vaplock™ kits to provide an effective means of sealed solvent delivery, and select from waste containment kits to collect effluents while minimizing harmful solvent exhaust. All Vaplock™ products are designed for ease of use and adaptability, and will conform to a broad range of standard laboratory solvent containers. Waste Accessory Kits include a solvent collection manifold, an organic solvent exhaust filter with breakthrough indicator, and adapters, plugs, and tubing connections required for installation on typical HPLC instruments.

- Minimize exposure to harmful chemical vapors
- Collect solvent waste from multiple effluent streams
- Highly adaptable and conforms to a broad range of containment types

### Kit Contents

- 10-port Waste Manifold
- (3) 1/4" NPT Polypropylene Plugs
- (6) 1/4-28 PTFE Plugs
- (1) 1/2 NPT Polypropylene Plug
- (1) Organic Vapor Filter
- (2) 2.2mm OD hard wall tubing connections
- (1) 2.5mm OD hard wall tubing connection
- (3) 1/8" OD hard wall tubing connections
- (2) 1/16" OD hard wall tubing connections
- (3) BARBED TUBING CONNECTION 1/4 ID tubing x 1/4 NPT Polypropylene
- (1) BARBED TUBING CONNECTION 1/8 ID tubing x 1/4 NPT Polypropylene
- (1) BARBED TUBING CONNECTION 3/16 ID tubing x 1/4 NPT Polypropylene
- (1) BARBED TUBING CONNECTION 3/8 ID tubing x 1/4 NPT Polypropylene
- (1) BARB TO BARB Y CONNECTOR with 1/4" (6.25mm) Barbs, Polypropylene
- (1) HARDWALL TUBE EXTENSION includes union connections and 5 feet 1/8 OD PTFE tubing
- (1) FILTER ADAPTER 1/4 NPT x 1/2 NPT polypropylene
- (1) BREAKTHROUGH COLOR INDICATOR for Vaplock™ organic vapor filter

Container Not Included.



MPD50-10K

Part #	Description	# Ports	Manifold Material
MPD50-10K	HPLC WASTE ACCESSORY KIT for DIN 50 threaded container, 10-port with (1) 1/2" NPT, (3) 1/4" NPT, (6) 1/4-28; includes Polypropylene Manifold, Fittings Kit, Exhaust Filter with adapter and color indicator	(1) 1/2 NPT, (3) 1/4 NPT, (6) 1/4-28	PP
MTD50-10K	HPLC WASTE ACCESSORY KIT for DIN 50 threaded container, 10-port with (1) 1/2" NPT, (3) 1/4" NPT, (6) 1/4-28; includes PTFE Manifold, Fittings Kit, Exhaust Filter with adapter and color indicator	(1) 1/2 NPT, (3) 1/4 NPT, (6) 1/4-28	PTFE

## Waste Kits



MP51-10



MP51-4

## 51mm WASTE CAPS

### Vapor Tight Connection

Waste manifolds are designed to fit standard 51mm threaded lab bottles.

### Chemical Resistance

Materials of construction include your choice of Polypropylene or PTFE manifold and insert with HDPE spin collar.

### Versatile Configuration

Manifolds can be configured for barbed connections, compression fittings, 1/4-28 fitting and ferrule sets. All manifolds are designed to accommodate our CF-100 Filter and indicator.

\*See the emissions filter section of our catalog

## Manifold Caps

Part #	Description	# Ports	Manifold Material
MP51-4	WASTE MANIFOLD for 51mm threaded container, 4-port with (3) 1/4" NPT, (1) 1/2" NPT, Polypropylene	(3) 1/4 NPT (1) 1/2 NPT	PP
MT51-4	WASTE MANIFOLD for 51mm threaded container, 4-port with (3) 1/4" NPT, (1) 1/2" NPT, PTFE	(3) 1/4 NPT (1) 1/2 NPT	PTFE
MP51-10	WASTE MANIFOLD for 51mm threaded container, 10-port with (3) 1/4" NPT, (1) 1/2" NPT, (6) 1/4-28, Polypropylene	(1) 1/2 NPT (3) 1/4 NPT (6) 1/4-28	PP
MT51-10	WASTE MANIFOLD for 51mm threaded container, 10-port with (3) 1/4" NPT, (1) 1/2" NPT, (6) 1/4-28, PTFE	(1) 1/2 NPT (3) 1/4 NPT (6) 1/4-28	PTFE

## 51mm WASTE KITS

VAPLOCK™ Closed Systems for solvent containment minimizes leaks, spills, and vapor escape from solvent waste and supply containers. Use Vaplock™ kits to provide an effective means of sealed solvent delivery, and select from waste containment kits to collect effluents while minimizing harmful solvent exhaust. All Vaplock™ products are designed for ease of use and adaptability, and will conform to a broad range of standard laboratory solvent containers. Waste Accessory Kits include a solvent collection manifold, an organic solvent exhaust filter with breakthrough indicator, and adapters, plugs, and tubing connections required for installation on typical HPLC instruments.

- Minimize exposure to harmful chemical vapors
- Collect solvent waste from multiple effluent streams
- Highly adaptable and conforms to a broad range of containment types

### Kit Contents

- 10-port Waste Manifold
- (3) 1/4" NPT Polypropylene Plugs
- (6) 1/4-28 PTFE Plugs
- (1) 1/2 NPT Polypropylene Plug
- (1) Organic Vapor Filter
- (2) 2.2mm OD hard wall tubing connections
- (1) 2.5mm OD hard wall tubing connection
- (3) 1/8" OD hard wall tubing connections
- (2) 1/16" OD hard wall tubing connections
- (3) BARBED TUBING CONNECTION 1/4 ID tubing x 1/4 NPT Polypropylene
- (1) BARBED TUBING CONNECTION 1/8 ID tubing x 1/4 NPT Polypropylene
- (1) BARBED TUBING CONNECTION 3/16 ID tubing x 1/4 NPT Polypropylene
- (1) BARBED TUBING CONNECTION 3/8 ID tubing x 1/4 NPT Polypropylene
- (1) BARB TO BARB Y CONNECTOR with 1/4" (6.25mm) Barbs, Polypropylene
- (1) HARDWALL TUBE EXTENSION includes union connections and 5 feet 1/8 OD PTFE tubing
- (1) FILTER ADAPTER 1/4 NPT x 1/2 NPT polypropylene
- (1) BREAKTHROUGH COLOR INDICATOR for Vaplock™ organic vapor filter

Container Not Included.



Part #	Description	# Ports	Manifold Material
MP51-10K	HPLC WASTE ACCESSORY KIT for 51mm threaded container, 10-port; includes Polypropylene Manifold, Fittings Kit, Exhaust Filter with adapter and color indicator	(1) 1/2 NPT (3) 1/4 NPT (6) 1/4-28	PP
MT51-10K	HPLC WASTE ACCESSORY KIT for 51mm threaded container, 10-port; includes PTFE Manifold, Fittings Kit, Exhaust Filter with adapter and color indicator	(1) 1/2 NPT (3) 1/4 NPT (6) 1/4-28	PTFE

### Waste Kits





MP53B-10



MP53B-4

## NALGENE 53B WASTE CAPS

### Vapor Tight Connection

Waste manifolds are designed to fit standard 53B threaded lab bottles.

### Chemical Resistance

Materials of construction include your choice of Polypropylene or PTFE manifold and insert with Polypropylene spin collar.

### Versatile Configuration

Manifolds can be configured for barbed connections, compression fittings, 1/4-28 fitting and ferrule sets. All manifolds are designed to accommodate our CF-100 Filter and indicator.

\*See the emissions filter section of our catalog

## Manifold Caps

Part #	Description	# Ports	Manifold Material
MP53B-4	WASTE MANIFOLD for 53B threaded container, 4-port with (3) 1/4" NPT, (1) 1/2" NPT, Polypropylene	(3) 1/4 NPT (1) 1/2 NPT	PP
MT53B-4	WASTE MANIFOLD for 53B threaded container, 4-port with (3) 1/4" NPT, (1) 1/2" NPT, PTFE	(3) 1/4 NPT (1) 1/2 NPT	PTFE
MP53B-10	WASTE MANIFOLD for 53B threaded container, 10-port with (1) 1/2" NPT, (3) 1/4" NPT, (6) 1/4-28, Polypropylene	(1) 1/2 NPT, (3) 1/4 NPT, (6) 1/4-28	PP
MT53B-10	WASTE MANIFOLD for 53B threaded container, 10-port with (1) 1/2" NPT, (3) 1/4" NPT, (6) 1/4-28, PTFE	(1) 1/2 NPT, (3) 1/4 NPT, (6) 1/4-28	PTFE



## NALGENE 53B WASTE KITS

VAPLOCK™ Closed Systems for solvent containment minimizes leaks, spills, and vapor escape from solvent waste and supply containers. Use Vaplock™ kits to provide an effective means of sealed solvent delivery, and select from waste containment kits to collect effluents while minimizing harmful solvent exhaust. All Vaplock™ products are designed for ease of use and adaptability, and will conform to a broad range of standard laboratory solvent containers. Waste Accessory Kits include a solvent collection manifold, an organic solvent exhaust filter with breakthrough indicator, and adapters, plugs, and tubing connections required for installation on typical HPLC instruments.

- Minimize exposure to harmful chemical vapors
- Collect solvent waste from multiple effluent streams
- Highly adaptable and conforms to a broad range of containment types

### Kit Contents

- 10-port Waste Manifold
- (3) 1/4" NPT Polypropylene Plugs
- (6) 1/4-28 PTFE Plugs
- (1) 1/2 NPT Polypropylene Plug
- (1) Organic Vapor Filter
- (2) 2.2mm OD hard wall tubing connections
- (1) 2.5mm OD hard wall tubing connection
- (3) 1/8" OD hard wall tubing connections
- (2) 1/16" OD hard wall tubing connections
- (3) BARBED TUBING CONNECTION 1/4 ID tubing x 1/4 NPT Polypropylene
- (1) BARBED TUBING CONNECTION 1/8 ID tubing x 1/4 NPT Polypropylene
- (1) BARBED TUBING CONNECTION 3/16 ID tubing x 1/4 NPT Polypropylene
- (1) BARBED TUBING CONNECTION 3/8 ID tubing x 1/4 NPT Polypropylene
- (1) BARB TO BARB Y CONNECTOR with 1/4" (6.25mm) Barbs, Polypropylene
- (1) HARDWALL TUBE EXTENSION includes union connections and 5 feet 1/8 OD PTFE tubing
- (1) FILTER ADAPTER 1/4 NPT x 1/2 NPT polypropylene
- (1) BREAKTHROUGH COLOR INDICATOR for Vaplock™ organic vapor filter

Container Not Included.



MP53B-10K

Part #	Description	# Ports	Manifold Material
MP53B-10K	HPLC WASTE ACCESSORY KIT for 53B threaded container, 10-port with (1) 1/2" NPT, (3) 1/4" NPT, (6) 1/4-28; includes Polypropylene Manifold, Fittings Kit, Exhaust Filter with adapter and color indicator	(1) 1/2 NPT, (3) 1/4 NPT, (6) 1/4-28	PP
MT53B-10K	HPLC WASTE ACCESSORY KIT for 53B threaded container, 10-port with (1) 1/2" NPT, (3) 1/4" NPT, (6) 1/4-28; includes PTFE Manifold, Fittings Kit, Exhaust Filter with adapter and color indicator	(1) 1/2 NPT, (3) 1/4 NPT, (6) 1/4-28	PTFE

### Waste Kits



MPD60-10



MPD60-4

## DIN 60 WASTE CAPS

### Vapor Tight Connection

Waste manifolds are designed to fit standard DIN 60 threaded containers.

### Chemical Resistance

Materials of construction include your choice of Polypropylene or PTFE manifold and insert with HDPE spin collar.

### Versatile Configuration

Manifolds can be configured for barbed connections, compression fittings, 1/4-28 fitting and ferrule sets. All manifolds are designed to accommodate our CF-100 Filter and indicator.

\*See the emissions filter section of our catalog

## Manifold Caps

Part #	Description	# Ports	Manifold Material
MPD60-4	WASTE MANIFOLD for DIN 60 threaded container, 4-port with (3) 1/4" NPT, (1) 1/2" NPT, Polypropylene	(3) 1/4 NPT, (1) 1/2 NPT	PP
MTD60-4	WASTE MANIFOLD for DIN 60 threaded container, 4-port with (3) 1/4" NPT, (1) 1/2" NPT, PTFE	(3) 1/4 NPT, (1) 1/2 NPT	PTFE
MPD60-10	WASTE MANIFOLD for DIN 60 threaded container, 10-port with (1) 1/2" NPT, (3) 1/4" NPT, (6) 1/4-28, Polypropylene	(1) 1/2 NPT, (3) 1/4 NPT, (6) 1/4-28	PP
MTD60-10	WASTE MANIFOLD for DIN 60 threaded container, 10-port with (1) 1/2" NPT, (3) 1/4" NPT, (6) 1/4-28, PTFE	(1) 1/2 NPT, (3) 1/4 NPT, (6) 1/4-28	PTFE

## DIN 60 WASTE KITS

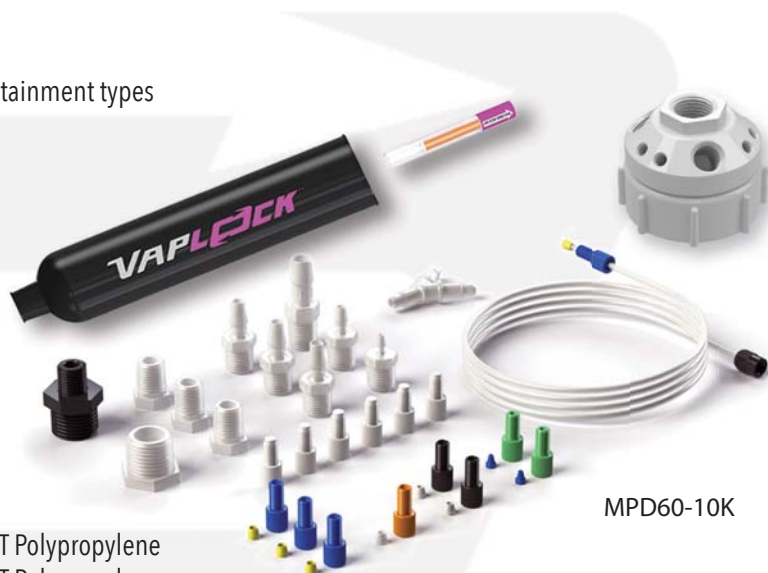
VAPLOCK™ Closed Systems for solvent containment minimizes leaks, spills, and vapor escape from solvent waste and supply containers. Use Vaplock™ kits to provide an effective means of sealed solvent delivery, and select from waste containment kits to collect effluents while minimizing harmful solvent exhaust. All Vaplock™ products are designed for ease of use and adaptability, and will conform to a broad range of standard laboratory solvent containers. Waste Accessory Kits include a solvent collection manifold, an organic solvent exhaust filter with breakthrough indicator, and adapters, plugs, and tubing connections required for installation on typical HPLC instruments.

- Minimize exposure to harmful chemical vapors
- Collect solvent waste from multiple effluent streams
- Highly adaptable and conforms to a broad range of containment types

### Kit Contents

- 10-port Waste Manifold
- (3) 1/4" NPT Polypropylene Plugs
- (6) 1/4-28 PTFE Plugs
- (1) 1/2 NPT Polypropylene Plug
- (1) Organic Vapor Filter
- (2) 2.2mm OD hard wall tubing connections
- (1) 2.5mm OD hard wall tubing connection
- (3) 1/8" OD hard wall tubing connections
- (2) 1/16" OD hard wall tubing connections
- (3) BARBED TUBING CONNECTION 1/4 ID tubing x 1/4 NPT Polypropylene
- (1) BARBED TUBING CONNECTION 1/8 ID tubing x 1/4 NPT Polypropylene
- (1) BARBED TUBING CONNECTION 3/16 ID tubing x 1/4 NPT Polypropylene
- (1) BARBED TUBING CONNECTION 3/8 ID tubing x 1/4 NPT Polypropylene
- (1) BARB TO BARB Y CONNECTOR with 1/4" (6.25mm) Barbs, Polypropylene
- (1) HARDWALL TUBE EXTENSION includes union connections and 5 feet 1/8 OD PTFE tubing
- (1) FILTER ADAPTER 1/4 NPT x 1/2 NPT polypropylene
- (1) BREAKTHROUGH COLOR INDICATOR for Vaplock™ organic vapor filter

Container Not Included.



MPD60-10K

Part #	Description	# Ports	Manifold Material
MPD60-10K	HPLC WASTE ACCESSORY KIT for DIN 60 threaded container, 10-port; includes Polypropylene Manifold, Fittings Kit, Exhaust Filter with adapter and color indicator	(1) 1/2 NPT, (3) 1/4 NPT, (6) 1/4-28	PP
MTD60-10K	HPLC WASTE ACCESSORY KIT for DIN 60 threaded container, 10-port; includes PTFE Manifold, Fittings Kit, Exhaust Filter with adapter and color indicator	(1) 1/2 NPT, (3) 1/4 NPT, (6) 1/4-28	PTFE

### Waste Kits



MP61-10



MP61-4

## 61mm WASTE CAPS

### Vapor Tight Connection

Waste manifolds are designed to fit standard 61mm threaded containers.

### Chemical Resistance

Materials of construction include your choice of Polypropylene or PTFE manifold and insert with HDPE spin collar.

### Versatile Configuration

Manifolds can be configured for barbed connections, compression fittings, 1/4-28 fitting and ferrule sets. All manifolds are designed to accommodate our CF-100 Filter and indicator.

\*See the emissions filter section of our catalog

## Manifold Caps

Part #	Description	# Ports	Manifold Material
MP61-4	WASTE MANIFOLD for 61mm threaded container, 4-port with (3) 1/4" NPT, (1) 1/2" NPT, PP Manifold	(3) 1/4 NPT, (1) 1/2 NPT	PP
MT61-4	WASTE MANIFOLD for 61mm threaded container, 4-port with (3) 1/4" NPT, (1) 1/2" NPT, PTFE	(3) 1/4 NPT, (1) 1/2 NPT	PTFE
MP61-10	WASTE MANIFOLD for 61mm threaded container, 10-port with (1) 1/2" NPT, (3) 1/4" NPT, (6) 1/4-28, Polypropylene	(1) 1/2 NPT, (3) 1/4 NPT, (6) 1/4-28	PP
MT61-10	WASTE MANIFOLD for 61mm threaded container, 10-port with (1) 1/2" NPT, (3) 1/4" NPT, (6) 1/4-28, PTFE	(1) 1/2 NPT, (3) 1/4 NPT, (6) 1/4-28	PTFE

## 61mm WASTE KITS

VAPLOCK™ Closed Systems for solvent containment minimizes leaks, spills, and vapor escape from solvent waste and supply containers. Use Vaplock™ kits to provide an effective means of sealed solvent delivery, and select from waste containment kits to collect effluents while minimizing harmful solvent exhaust. All Vaplock™ products are designed for ease of use and adaptability, and will conform to a broad range of standard laboratory solvent containers. Waste Accessory Kits include a solvent collection manifold, an organic solvent exhaust filter with breakthrough indicator, and adapters, plugs, and tubing connections required for installation on typical HPLC instruments.

- Minimize exposure to harmful chemical vapors
- Collect solvent waste from multiple effluent streams
- Highly adaptable and conforms to a broad range of containment types

### Kit Contents

- 10-port Waste Manifold
- (3) 1/4" NPT Polypropylene Plugs
- (6) 1/4-28 PTFE Plugs
- (1) 1/2 NPT Polypropylene Plug
- (1) Organic Vapor Filter
- (2) 2.2mm OD hard wall tubing connections
- (1) 2.5mm OD hard wall tubing connection
- (3) 1/8" OD hard wall tubing connections
- (2) 1/16" OD hard wall tubing connections
- (3) BARBED TUBING CONNECTION 1/4 ID tubing x 1/4 NPT Polypropylene
- (1) BARBED TUBING CONNECTION 1/8 ID tubing x 1/4 NPT Polypropylene
- (1) BARBED TUBING CONNECTION 3/16 ID tubing x 1/4 NPT Polypropylene
- (1) BARBED TUBING CONNECTION 3/8 ID tubing x 1/4 NPT Polypropylene
- (1) BARB TO BARB Y CONNECTOR with 1/4" (6.25mm) Barbs, Polypropylene
- (1) HARDWALL TUBE EXTENSION includes union connections and 5 feet 1/8 OD PTFE tubing
- (1) FILTER ADAPTER 1/4 NPT x 1/2 NPT polypropylene
- (1) BREAKTHROUGH COLOR INDICATOR for Vaplock™ organic vapor filter

Container Not Included.



MP61-10K

Part #	Description	# Ports	Manifold Material
MP61-10K	HPLC WASTE ACCESSORY KIT for 61mm threaded container, 10-port; includes Polypropylene Manifold, Fittings Kit, Exhaust Filter with adapter and color indicator	(1) 1/2 NPT, (3) 1/4 NPT, (6) 1/4-28	PP
MT61-10K	HPLC WASTE ACCESSORY KIT for 61mm threaded container, 10-port; includes PTFE Manifold, Fittings Kit, Exhaust Filter with adapter and color indicator	(1) 1/2 NPT, (3) 1/4 NPT, (6) 1/4-28	PTFE

### Waste Kits



MP63-10



MP63-4

## 63mm WASTE CAPS (RIEKE/NOWPAK)

### Vapor Tight Connection

Waste manifolds are designed to fit standard 63mm threads, including Rieke and Nowpak.

**Note:** Some 63mm industrial threads differ. Please contact us regarding your particular container requirements.

### Chemical Resistance

Materials of construction include your choice of Polypropylene or PTFE manifold and insert with HDPE spin collar.

### Versatile Configuration

Manifolds can be configured for barbed connections, compression fittings, 1/4-28 fitting and ferrule sets. All manifolds are designed to accommodate our CF-100 Filter and indicator.

\*See the emissions filter section of our catalog

## Manifold Caps

Part #	Description	# Ports	Manifold Material
MP63-4	WASTE MANIFOLD for 63mm threaded container, 4-port with (3) 1/4" NPT, (1) 1/2" NPT, PP Manifold	(3) 1/4 NPT (1) 1/2 NPT	PP
MT63-4	WASTE MANIFOLD for 63mm threaded container, 4-port with (3) 1/4" NPT, (1) 1/2" NPT, PTFE	(3) 1/4 NPT (1) 1/2 NPT	PTFE
MP63-10	WASTE MANIFOLD for 63mm threaded container, 10-port with (1) 1/2" NPT, (3) 1/4" NPT, (6) 1/4-28, Polypropylene	(1) 1/2 NPT, (3) 1/4 NPT, (6) 1/4-28	PP
MT63-10	WASTE MANIFOLD for 63mm threaded container, 10-port with (1) 1/2" NPT, (3) 1/4" NPT, (6) 1/4-28, PTFE	(1) 1/2 NPT, (3) 1/4 NPT, (6) 1/4-28	PTFE



## 63mm WASTE KITS (RIEKE/NOWPAK)

VAPLOCK™ Closed Systems for solvent containment minimizes leaks, spills, and vapor escape from solvent waste and supply containers. Use Vaplock™ kits to provide an effective means of sealed solvent delivery, and select from waste containment kits to collect effluents while minimizing harmful solvent exhaust. All Vaplock™ products are designed for ease of use and adaptability, and will conform to a broad range of standard laboratory solvent containers. Waste Accessory Kits include a solvent collection manifold, an organic solvent exhaust filter with breakthrough indicator, and adapters, plugs, and tubing connections required for installation on typical HPLC instruments.

- Minimize exposure to harmful chemical vapors
- Collect solvent waste from multiple effluent streams
- Highly adaptable and conforms to a broad range of containment types

### Kit Contents

- 10-port Waste Manifold
- (3) 1/4" NPT Polypropylene Plugs
- (6) 1/4-28 PTFE Plugs
- (1) 1/2 NPT Polypropylene Plug
- (1) Organic Vapor Filter
- (2) 2.2mm OD hard wall tubing connections
- (1) 2.5mm OD hard wall tubing connection
- (3) 1/8" OD hard wall tubing connections
- (2) 1/16" OD hard wall tubing connections
- (3) BARBED TUBING CONNECTION 1/4 ID tubing x 1/4 NPT Polypropylene
- (1) BARBED TUBING CONNECTION 1/8 ID tubing x 1/4 NPT Polypropylene
- (1) BARBED TUBING CONNECTION 3/16 ID tubing x 1/4 NPT Polypropylene
- (1) BARBED TUBING CONNECTION 3/8 ID tubing x 1/4 NPT Polypropylene
- (1) BARB TO BARB Y CONNECTOR with 1/4" (6.25mm) Barbs, Polypropylene
- (1) HARDWALL TUBE EXTENSION includes union connections and 5 feet 1/8 OD PTFE tubing
- (1) FILTER ADAPTER 1/4 NPT x 1/2 NPT polypropylene
- (1) BREAKTHROUGH COLOR INDICATOR for Vaplock™ organic vapor filter

Container Not Included.



Part #	Description	# Ports	Manifold Material
MP63-10K	HPLC WASTE ACCESSORY KIT for 63mm threaded container, 10-port with (1) 1/2" NPT, (3) 1/4" NPT, (6) 1/4-28; includes Polypropylene Manifold, Fittings Kit, Exhaust Filter with adapter and color indicator	(1) 1/2 NPT, (3) 1/4 NPT, (6) 1/4-28	PP
MT63-10K	HPLC WASTE ACCESSORY KIT for 63mm threaded container, 10-port with (1) 1/2" NPT, (3) 1/4" NPT, (6) 1/4-28; includes PTFE Manifold, Fittings Kit, Exhaust Filter with adapter and color indicator	(1) 1/2 NPT, (3) 1/4 NPT, (6) 1/4-28	PTFE

### Waste Kits



MP70A-10



MP70A-4

## 70mm WASTE CAPS (8TPI RIEKE/HEDWIN)

### Vapor Tight Connection

Waste manifolds are designed to fit standard 70mm 8TPI threaded containers.

**Note:** Please enquire for 70mm 6TPI options.

### Chemical Resistance

Materials of construction include your choice of Polypropylene or PTFE manifold and insert with HDPE spin collar.

### Versatile Configuration

Manifolds can be configured for barbed connections, compression fittings, 1/4-28 fitting and ferrule sets. All manifolds are designed to accommodate our CF-100 Filter and indicator.

\*See the emissions filter section of our catalog

## Manifold Caps

Part #	Description	# Ports	Manifold Material
MP70A-4	WASTE MANIFOLD for 70mm threaded Hedwin/Rieke container, 4-port with (3) 1/4" NPT, (1) 1/2" NPT, Polypropylene	(3) 1/4 NPT, (1) 1/2 NPT	PP
MT70A-4	WASTE MANIFOLD for 70mm threaded Hedwin/Rieke container, 4-port with (3) 1/4" NPT, (1) 1/2" NPT, PTFE	(3) 1/4 NPT, (1) 1/2 NPT	PTFE
MP70A-10	WASTE MANIFOLD for 70mm threaded Hedwin/Rieke container, 10-port with (1) 1/2" NPT, (3) 1/4" NPT, (6) 1/4-28, Polypropylene	(1) 1/2 NPT, (3) 1/4 NPT, (6) 1/4-28	PP
MT70A-10	WASTE MANIFOLD for 70mm threaded Hedwin/Rieke container, 10-port with (1) 1/2" NPT, (3) 1/4" NPT, (6) 1/4-28, PTFE	(1) 1/2 NPT, (3) 1/4 NPT, (6) 1/4-28	PTFE

## 70mm WASTE CAPS (8TPI RIEKE/HEDWIN)

VAPLOCK™ Closed Systems for solvent containment minimizes leaks, spills, and vapor escape from solvent waste and supply containers. Use Vaplock™ kits to provide an effective means of sealed solvent delivery, and select from waste containment kits to collect effluents while minimizing harmful solvent exhaust. All Vaplock™ products are designed for ease of use and adaptability, and will conform to a broad range of standard laboratory solvent containers. Waste Accessory Kits include a solvent collection manifold, an organic solvent exhaust filter with breakthrough indicator, and adapters, plugs, and tubing connections required for installation on typical HPLC instruments.

- Minimize exposure to harmful chemical vapors
- Collect solvent waste from multiple effluent streams
- Highly adaptable and conforms to a broad range of containment types

### Kit Contents

- 10-port Waste Manifold
- (3) 1/4" NPT Polypropylene Plugs
- (6) 1/4-28 PTFE Plugs
- (1) 1/2 NPT Polypropylene Plug
- (1) Organic Vapor Filter
- (2) 2.2mm OD hard wall tubing connections
- (1) 2.5mm OD hard wall tubing connection
- (3) 1/8" OD hard wall tubing connections
- (2) 1/16" OD hard wall tubing connections
- (3) BARBED TUBING CONNECTION 1/4 ID tubing x 1/4 NPT Polypropylene
- (1) BARBED TUBING CONNECTION 1/8 ID tubing x 1/4 NPT Polypropylene
- (1) BARBED TUBING CONNECTION 3/16 ID tubing x 1/4 NPT Polypropylene
- (1) BARBED TUBING CONNECTION 3/8 ID tubing x 1/4 NPT Polypropylene
- (1) BARB TO BARB Y CONNECTOR with 1/4" (6.25mm) Barbs, Polypropylene
- (1) HARDWALL TUBE EXTENSION includes union connections and 5 feet 1/8 OD PTFE tubing
- (1) FILTER ADAPTER 1/4 NPT x 1/2 NPT polypropylene
- (1) BREAKTHROUGH COLOR INDICATOR for Vaplock™ organic vapor filter

Container Not Included.



Part #	Description	# Ports	Manifold Material
MP70A-10K	HPLC WASTE ACCESSORY KIT for 70mm threaded container, 10-port; includes Polypropylene Manifold, Fittings Kit, Exhaust Filter with adapter and color indicator	(1) 1/2 NPT, (3) 1/4 NPT, (6) 1/4-28	PP
MT70A-10K	HPLC WASTE ACCESSORY KIT for 70mm threaded container, 10-port; includes PTFE Manifold, Fittings Kit, Exhaust Filter with adapter and color indicator	(1) 1/2 NPT, (3) 1/4 NPT, (6) 1/4-28	PTFE

### Waste Kits



MPN70-10



MPN70-4

## 70mm WASTE CAPS (NALGENE)

### Vapor Tight Connection

Waste manifolds are designed to fit standard 70mm Nalgene lab containers.

### Chemical Resistance

Materials of construction include your choice of Polypropylene or PTFE manifold and insert with Polypropylene spin collar.

### Versatile Configuration

Manifolds can be configured for barbed connections, compression fittings, 1/4-28 fitting and ferrule sets. All manifolds are designed to accommodate our CF-100 Filter and indicator.

\*See the emissions filter section of our catalog

## Manifold Caps

Part #	Description	# Ports	Manifold Material
MPN70-4	WASTE MANIFOLD for 70mm threaded Nalgene container, 4-port with (3) 1/4" NPT, (1) 1/2" NPT, Polypropylene	(3) 1/4 NPT (1) 1/2 NPT	PP
MTN70-4	WASTE MANIFOLD for 70mm threaded Nalgene container, 4-port with (3) 1/4" NPT, (1) 1/2" NPT, PTFE	(3) 1/4 NPT (1) 1/2 NPT	PTFE
MPN70-10	WASTE MANIFOLD for 70mm threaded Nalgene container, 10-port with (1) 1/2" NPT, (3) 1/4" NPT, (6) 1/4-28, Polypropylene	(1) 1/2 NPT, (3) 1/4 NPT, (6) 1/4-28	PP
MTN70-10	WASTE MANIFOLD for 70mm threaded Nalgene container, 10-port with (1) 1/2" NPT, (3) 1/4" NPT, (6) 1/4-28, PTFE	(1) 1/2 NPT, (3) 1/4 NPT, (6) 1/4-28	PTFE

## 70mm WASTE KITS (NALGENE)

VAPLOCK™ Closed Systems for solvent containment minimizes leaks, spills, and vapor escape from solvent waste and supply containers. Use Vaplock™ kits to provide an effective means of sealed solvent delivery, and select from waste containment kits to collect effluents while minimizing harmful solvent exhaust. All Vaplock™ products are designed for ease of use and adaptability, and will conform to a broad range of standard laboratory solvent containers. Waste Accessory Kits include a solvent collection manifold, an organic solvent exhaust filter with breakthrough indicator, and adapters, plugs, and tubing connections required for installation on typical HPLC instruments.

- Minimize exposure to harmful chemical vapors
- Collect solvent waste from multiple effluent streams
- Highly adaptable and conforms to a broad range of containment types

### Kit Contents

- 10-port Waste Manifold
- (3) 1/4" NPT Polypropylene Plugs
- (6) 1/4-28 PTFE Plugs
- (1) 1/2 NPT Polypropylene Plug
- (1) Organic Vapor Filter
- (2) 2.2mm OD hard wall tubing connections
- (1) 2.5mm OD hard wall tubing connection
- (3) 1/8" OD hard wall tubing connections
- (2) 1/16" OD hard wall tubing connections
- (3) BARBED TUBING CONNECTION 1/4 ID tubing x 1/4 NPT Polypropylene
- (1) BARBED TUBING CONNECTION 1/8 ID tubing x 1/4 NPT Polypropylene
- (1) BARBED TUBING CONNECTION 3/16 ID tubing x 1/4 NPT Polypropylene
- (1) BARBED TUBING CONNECTION 3/8 ID tubing x 1/4 NPT Polypropylene
- (1) BARB TO BARB Y CONNECTOR with 1/4" (6.25mm) Barbs, Polypropylene
- (1) HARDWALL TUBE EXTENSION includes union connections and 5 feet 1/8 OD PTFE tubing
- (1) FILTER ADAPTER 1/4 NPT x 1/2 NPT polypropylene
- (1) BREAKTHROUGH COLOR INDICATOR for Vaplock™ organic vapor filter

Container Not Included.



MPN70-10K

Part #	Description	# Ports	Manifold Material
MPN70-10K	HPLC WASTE ACCESSORY KIT for 70mm threaded container, 10-port with (1) 1/2" NPT, (3) 1/4" NPT, (6) 1/4-28; includes Polypropylene Manifold, Fittings Kit, Exhaust Filter with adapter and color indicator	(1) 1/2 NPT, (3) 1/4 NPT, (6) 1/4-28	PP
MTN70-10K	HPLC WASTE ACCESSORY KIT for 70mm threaded container, 10-port with (1) 1/2" NPT, (3) 1/4" NPT, (6) 1/4-28; includes PTFE Manifold, Fittings Kit, Exhaust Filter with adapter and color indicator	(1) 1/2 NPT, (3) 1/4 NPT, (6) 1/4-28	PTFE

### Waste Kits





MPGL80-10



MPGL80-4

## GL80 WASTE CAPS

### Vapor Tight Connection

Waste manifolds are designed to fit standard GL80 threaded containers.

### Chemical Resistance

Materials of construction include your choice of Polypropylene or PTFE manifold and insert with Polypropylene spin collar.

### Versatile Configuration

Manifolds can be configured for barbed connections, compression fittings, 1/4-28 fitting and ferrule sets. All manifolds are designed to accommodate our CF-100 Filter and indicator.

\*See the emissions filter section of our catalog

## Manifold Caps

Part #	Description	# Ports	Manifold Material
MPGL80-4	WASTE MANIFOLD for GL80 threaded container, 4-port with (3) 1/4" NPT, (1) 1/2" NPT, Polypropylene	(3) 1/4 NPT (1) 1/2 NPT	PP
MTGL80-4	WASTE MANIFOLD for GL80 threaded container, 4-port with (3) 1/4" NPT, (1) 1/2" NPT, PTFE	(3) 1/4 NPT (1) 1/2 NPT	PTFE
MPGL80-10	WASTE MANIFOLD for GL80 threaded container, 10-port with (1) 1/2" NPT, (3) 1/4" NPT, (6) 1/4-28, Polypropylene	(1) 1/2 NPT (3) 1/4 NPT (6) 1/4-28	PP
MTGL80-10	WASTE MANIFOLD for GL80 threaded container, 10-port with (1) 1/2" NPT, (3) 1/4" NPT, (6) 1/4-28, PTFE	(1) 1/2 NPT (3) 1/4 NPT (6) 1/4-28	PTFE



## GL80 WASTE KITS

VAPLOCK™ Closed Systems for solvent containment minimizes leaks, spills, and vapor escape from solvent waste and supply containers. Use Vaplock™ kits to provide an effective means of sealed solvent delivery, and select from waste containment kits to collect effluents while minimizing harmful solvent exhaust. All Vaplock™ products are designed for ease of use and adaptability, and will conform to a broad range of standard laboratory solvent containers. Waste Accessory Kits include a solvent collection manifold, an organic solvent exhaust filter with breakthrough indicator, and adapters, plugs, and tubing connections required for installation on typical HPLC instruments.

- Minimize exposure to harmful chemical vapors
- Collect solvent waste from multiple effluent streams
- Highly adaptable and conforms to a broad range of containment types

### Kit Contents

- 10-port Waste Manifold
- (3) 1/4" NPT Polypropylene Plugs
- (6) 1/4-28 PTFE Plugs
- (1) 1/2 NPT Polypropylene Plug
- (1) Organic Vapor Filter
- (2) 2.2mm OD hard wall tubing connections
- (1) 2.5mm OD hard wall tubing connection
- (3) 1/8" OD hard wall tubing connections
- (2) 1/16" OD hard wall tubing connections
- (3) BARBED TUBING CONNECTION 1/4 ID tubing x 1/4 NPT Polypropylene
- (1) BARBED TUBING CONNECTION 1/8 ID tubing x 1/4 NPT Polypropylene
- (1) BARBED TUBING CONNECTION 3/16 ID tubing x 1/4 NPT Polypropylene
- (1) BARBED TUBING CONNECTION 3/8 ID tubing x 1/4 NPT Polypropylene
- (1) BARB TO BARB Y CONNECTOR with 1/4" (6.25mm) Barbs, Polypropylene
- (1) HARDWALL TUBE EXTENSION includes union connections and 5 feet 1/8 OD PTFE tubing
- (1) FILTER ADAPTER 1/4 NPT x 1/2 NPT polypropylene
- (1) BREAKTHROUGH COLOR INDICATOR for Vaplock™ organic vapor filter

Container Not Included.



MPGL80-10K

Part #	Description	# Ports	Manifold Material
MPGL80-10K	HPLC WASTE ACCESSORY KIT for GL80 threaded container, 10-port with (1) 1/2" NPT, (3) 1/4" NPT, (6) 1/4-28; includes Polypropylene Manifold, Fittings Kit, Exhaust Filter with adapter and color indicator	(1) 1/2 NPT, (3) 1/4 NPT, (6) 1/4-28	PP
MTGL80-10K	HPLC WASTE ACCESSORY KIT for GL80 threaded container, 10-port with (1) 1/2" NPT, (3) 1/4" NPT, (6) 1/4-28; includes PTFE Manifold, Fittings Kit, Exhaust Filter with adapter and color indicator	(1) 1/2 NPT, (3) 1/4 NPT, (6) 1/4-28	PTFE

## Waste Kits



MP83B-10



MP83B-4

## NALGENE 83B WASTE CAPS

### Vapor Tight Connection

Waste manifolds are designed to fit standard 83B threaded lab containers.

### Chemical Resistance

Materials of construction include your choice of Polypropylene or PTFE manifold and insert with Polypropylene spin collar.

### Versatile Configuration

Manifolds can be configured for barbed connections, compression fittings, 1/4-28 fitting and ferrule sets. All manifolds are designed to accommodate our CF-100 Filter and indicator.

\*See the emissions filter section of our catalog

## Manifold Caps

Part #	Description	# Ports	Manifold Material
MP83B-4	WASTE MANIFOLD for 83B threaded container, 4-port with (3) 1/4" NPT, (1) 1/2" NPT, Polypropylene	(3) 1/4 NPT, (1) 1/2 NPT	PP
MT83B-4	WASTE MANIFOLD for 83B threaded container, 4-port with (3) 1/4" NPT, (1) 1/2" NPT, PTFE	(3) 1/4 NPT, (1) 1/2 NPT	PTFE
MP83B-10	WASTE MANIFOLD for 83B threaded container, 10-port with (1) 1/2" NPT, (3) 1/4" NPT, (6) 1/4-28, Polypropylene	(1) 1/2 NPT, (3) 1/4 NPT, (6) 1/4-28	PP
MT83B-10	WASTE MANIFOLD for 83B threaded container, 10-port with (1) 1/2" NPT, (3) 1/4" NPT, (6) 1/4-28, PTFE	(1) 1/2 NPT, (3) 1/4 NPT, (6) 1/4-28	PTFE

## NALGENE 83B WASTE KITS

VAPLOCK™ Closed Systems for solvent containment minimizes leaks, spills, and vapor escape from solvent waste and supply containers. Use Vaplock™ kits to provide an effective means of sealed solvent delivery, and select from waste containment kits to collect effluents while minimizing harmful solvent exhaust. All Vaplock™ products are designed for ease of use and adaptability, and will conform to a broad range of standard laboratory solvent containers. Waste Accessory Kits include a solvent collection manifold, an organic solvent exhaust filter with breakthrough indicator, and adapters, plugs, and tubing connections required for installation on typical HPLC instruments.

- Minimize exposure to harmful chemical vapors
- Collect solvent waste from multiple effluent streams
- Highly adaptable and conforms to a broad range of containment types

### Kit Contents

- 10-port Waste Manifold
- (3) 1/4" NPT Polypropylene Plugs
- (6) 1/4-28 PTFE Plugs
- (1) 1/2 NPT Polypropylene Plug
- (1) Organic Vapor Filter
- (2) 2.2mm OD hard wall tubing connections
- (1) 2.5mm OD hard wall tubing connection
- (3) 1/8" OD hard wall tubing connections
- (2) 1/16" OD hard wall tubing connections
- (3) BARBED TUBING CONNECTION 1/4 ID tubing x 1/4 NPT Polypropylene
- (1) BARBED TUBING CONNECTION 1/8 ID tubing x 1/4 NPT Polypropylene
- (1) BARBED TUBING CONNECTION 3/16 ID tubing x 1/4 NPT Polypropylene
- (1) BARBED TUBING CONNECTION 3/8 ID tubing x 1/4 NPT Polypropylene
- (1) BARB TO BARB Y CONNECTOR with 1/4" (6.25mm) Barbs, Polypropylene
- (1) HARDWALL TUBE EXTENSION includes union connections and 5 feet 1/8 OD PTFE tubing
- (1) FILTER ADAPTER 1/4 NPT x 1/2 NPT polypropylene
- (1) BREAKTHROUGH COLOR INDICATOR for Vaplock™ organic vapor filter

Container Not Included.



MP83B-10K

Part #	Description	# Ports	Manifold Material
MP83B-10K	HPLC WASTE ACCESSORY KIT for 83B threaded container, 10-port; includes Polypropylene Manifold, Fittings Kit, Exhaust Filter with adapter and color indicator	(1) 1/2 NPT, (3) 1/4 NPT, (6) 1/4-28	PP
MT83B-10K	HPLC WASTE ACCESSORY KIT for 83B threaded container, 10-port; includes PTFE Manifold, Fittings Kit, Exhaust Filter with adapter and color indicator	(1) 1/2 NPT, (3) 1/4 NPT, (6) 1/4-28	PTFE

### Waste Kits



MP100415-10



MP100415-4

## NALGENE 100-415 WASTE CAPS

### Vapor Tight Connection

Waste manifolds are designed to fit standard 100-415 threaded containers.

### Chemical Resistance

Materials of construction include your choice of Polypropylene or PTFE manifold and insert with Polypropylene spin collar.

### Versatile Configuration

Manifolds can be configured for barbed connections, compression fittings, 1/4-28 fitting and ferrule sets. All manifolds are designed to accommodate our CF-100 Filter and indicator.

\*See the emissions filter section of our catalog

## Manifold Caps

Part #	Description	# Ports	Manifold Material
MP100415-4	WASTE MANIFOLD for 100-415 threaded container, 4-port with (3) 1/4" NPT, (1) 1/2" NPT, Polypropylene	(3) 1/4 NPT (1) 1/2 NPT	PP
MT100415-4	WASTE MANIFOLD for 100-415 threaded container, 4-port with (3) 1/4" NPT, (1) 1/2" NPT, PTFE	(3) 1/4 NPT (1) 1/2 NPT	PTFE
MP100415-10	WASTE MANIFOLD for 100-415 threaded container, 10-port with (1) 1/2" NPT, (3) 1/4" NPT, (6) 1/4-28, Polypropylene	(1) 1/2 NPT (3) 1/4 NPT (6) 1/4-28	PP
MT100415-10	WASTE MANIFOLD for 100-415 threaded container, 10-port with (1) 1/2" NPT, (3) 1/4" NPT, (6) 1/4-28, PTFE	(1) 1/2 NPT (3) 1/4 NPT (6) 1/4-28	PTFE

## NALGENE 100-415 WASTE KITS

VAPLOCK™ Closed Systems for solvent containment minimizes leaks, spills, and vapor escape from solvent waste and supply containers. Use Vaplock™ kits to provide an effective means of sealed solvent delivery, and select from waste containment kits to collect effluents while minimizing harmful solvent exhaust. All Vaplock™ products are designed for ease of use and adaptability, and will conform to a broad range of standard laboratory solvent containers. Waste Accessory Kits include a solvent collection manifold, an organic solvent exhaust filter with breakthrough indicator, and adapters, plugs, and tubing connections required for installation on typical HPLC instruments.

- Minimize exposure to harmful chemical vapors
- Collect solvent waste from multiple effluent streams
- Highly adaptable and conforms to a broad range of containment types

### Kit Contents

- 10-port Waste Manifold
- (3) 1/4" NPT Polypropylene Plugs
- (6) 1/4-28 PTFE Plugs
- (1) 1/2 NPT Polypropylene Plug
- (1) Organic Vapor Filter
- (2) 2.2mm OD hard wall tubing connections
- (1) 2.5mm OD hard wall tubing connection
- (3) 1/8" OD hard wall tubing connections
- (2) 1/16" OD hard wall tubing connections
- (3) BARBED TUBING CONNECTION 1/4 ID tubing x 1/4 NPT Polypropylene
- (1) BARBED TUBING CONNECTION 1/8 ID tubing x 1/4 NPT Polypropylene
- (1) BARBED TUBING CONNECTION 3/16 ID tubing x 1/4 NPT Polypropylene
- (1) BARBED TUBING CONNECTION 3/8 ID tubing x 1/4 NPT Polypropylene
- (1) BARB TO BARB Y CONNECTOR with 1/4" (6.25mm) Barbs, Polypropylene
- (1) HARDWALL TUBE EXTENSION includes union connections and 5 feet 1/8 OD PTFE tubing
- (1) FILTER ADAPTER 1/4 NPT x 1/2 NPT polypropylene
- (1) BREAKTHROUGH COLOR INDICATOR for Vaplock™ organic vapor filter

Container Not Included.



MP100415-10K

Part #	Description	# Ports	Manifold Material
MP100415-10K	HPLC WASTE ACCESSORY KIT for 100-415 threaded container, 10-port; includes Polypropylene Manifold, Fittings Kit, Exhaust Filter with adapter and color indicator	(1) 1/2 NPT, (3) 1/4 NPT, (6) 1/4-28	PP
MT100415-10K	HPLC WASTE ACCESSORY KIT for 100-415 threaded container, 10-port; includes PTFE Manifold, Fittings Kit, Exhaust Filter with adapter and color indicator	(1) 1/2 NPT, (3) 1/4 NPT, (6) 1/4-28	PTFE

### Waste Kits





MPSQD-10



MPPQD-10

## JUSTRITE® CONTAINER QUICK DISCONNECT WASTE CAPS

### Vapor Tight Connection

Waste manifolds are designed to fit Justrite HPLC quick disconnect safety containers.

### Chemical Resistance

Materials of construction include your choice of Polypropylene or PTFE manifold with Polypropylene or stainless steel quick disconnect.

### Versatile Configuration

Manifolds can be configured for barbed connections, compression fittings, 1/4-28 fitting and ferrule sets. To complete the closed system, attach a Vaplock emissions filter to the separate exhaust port quick disconnect using the appropriate adapter.

\*See the emissions and filter section of our catalog

### Manifold Caps

Part #	Description	# Ports	Manifold Material
MPPQD-4	WASTE MANIFOLD for Justrite container, 4-port with (3) 1/4" NPT, (1) 1/2" NPT, Polypropylene Manifold, Polypropylene disconnect	(3) 1/4 NPT, (1) 1/2 NPT	PP
MPSQD-4	WASTE MANIFOLD for Justrite container, 4-port with (3) 1/4" NPT, (1) 1/2" NPT, Polypropylene Manifold, Stainless Steel disconnect	(3) 1/4 NPT, (1) 1/2 NPT	PP
MTSQD-4	WASTE MANIFOLD for Justrite container, 4-port with (3) 1/4" NPT, (1) 1/2" NPT, PTFE Manifold, Stainless Steel disconnect	(3) 1/4 NPT, (1) 1/2 NPT	PTFE
MPPQD-10	WASTE MANIFOLD for Justrite container container, 10-port with (3) 1/4" NPT, (1) 1/2" NPT, (6) 1/4-28, Polypropylene Manifold, Polypropylene disconnect	(1) 1/2 NPT, (3) 1/4 NPT, (6) 1/4-28	PP
MPSQD-10	WASTE MANIFOLD for Justrite container container, 10-port with (3) 1/4" NPT, (1) 1/2" NPT, (6) 1/4-28, Polypropylene Manifold, Stainless Steel disconnect	(1) 1/2 NPT, (3) 1/4 NPT, (6) 1/4-28	PP
MTSQD-10	WASTE MANIFOLD for Justrite container container, 10-port with (3) 1/4" NPT, (1) 1/2" NPT, (6) 1/4-28, PTFE Manifold, Stainless Steel disconnect	(1) 1/2 NPT, (3) 1/4 NPT, (6) 1/4-28	PTFE



## JUSTRITE® CONTAINER QUICK DISCONNECT WASTE KITS

VAPLOCK™ Closed Systems for solvent containment minimizes leaks, spills, and vapor escape from solvent waste and supply containers. Use Vaplock™ kits to provide an effective means of sealed solvent delivery, and select from waste containment kits to collect effluents while minimizing harmful solvent exhaust. All Vaplock™ products are designed for ease of use and adaptability, and will conform to a broad range of standard laboratory solvent containers. Waste Accessory Kits include a solvent collection manifold, an organic solvent exhaust filter with breakthrough indicator, and adapters, plugs, and tubing connections required for installation on typical HPLC instruments.

- Minimize exposure to harmful chemical vapors
- Collect solvent waste from multiple effluent streams
- Highly adaptable and conforms to a broad range of containment types

### Kit Contents

- 10-port Waste Manifold
- (3) 1/4" NPT Polypropylene Plugs
- (6) 1/4-28 PTFE Plugs
- (1) 1/2 NPT Polypropylene Plug
- (1) Organic Vapor Filter
- (2) 2.2mm OD hard wall tubing connections
- (1) 2.5mm OD hard wall tubing connection
- (3) 1/8" OD hard wall tubing connections
- (2) 1/16" OD hard wall tubing connections
- (3) BARBED TUBING CONNECTION 1/4 ID tubing x 1/4 NPT Polypropylene
- (1) BARBED TUBING CONNECTION 1/8 ID tubing x 1/4 NPT Polypropylene
- (1) BARBED TUBING CONNECTION 3/16 ID tubing x 1/4 NPT Polypropylene
- (1) BARBED TUBING CONNECTION 3/8 ID tubing x 1/4 NPT Polypropylene
- (1) BARB TO BARB Y CONNECTOR with 1/4" (6.25mm) Barbs, Polypropylene
- (1) HARDWALL TUBE EXTENSION includes union connections and 5 feet 1/8 OD PTFE tubing
- (1) FILTER ADAPTER 1/4 NPT x 1/2 NPT polypropylene
- (1) BREAKTHROUGH COLOR INDICATOR for Vaplock™ organic vapor filter

Container Not Included.



Part #	Description	# Ports	Manifold Material
MPPQD-10K	HPLC WASTE ACCESSORY KIT for Justrite container, 10-port; includes Polypropylene Manifold, Polypropylene Disconnect, Fittings Kit, Exhaust Filter with adapter and color indicator	(1) 1/2 NPT, (3) 1/4 NPT, (6) 1/4-28	PP
MPSQD-10K	HPLC WASTE ACCESSORY KIT for Justrite container, 10-port; includes Polypropylene Manifold, Stainless Steel Disconnect, Fittings Kit, Exhaust Filter with adapter and color indicator	(1) 1/2 NPT, (3) 1/4 NPT, (6) 1/4-28	PP
MTSQD-10K	HPLC WASTE ACCESSORY KIT for Justrite container, 10-port; includes PTFE Manifold, Stainless Steel Disconnect, Fittings Kit, Exhaust Filter with adapter and color indicator	(1) 1/2 NPT, (3) 1/4 NPT, (6) 1/4-28	PTFE

### Waste Kits



MPD2F-10

## DRUM WASTE CAPS (2" FINE THREAD)

### Vapor Tight Connection

Waste manifolds are designed to fit US standard 2" drum bung with fine threads.

### Chemical Resistance

Materials of construction include your choice of Polypropylene or PTFE manifold with Polypropylene drum thread adapter.

### Versatile Configuration

Manifolds can be configured for barbed connections, compression fittings, 1/4-28 fitting and ferrule sets. All manifolds are designed to accommodate our CF-100 Filter and indicator.

\*See the emissions filter section of our catalog

### Manifold Caps

Part #	Description	# Ports	Manifold Material
MPD2F-4	WASTE MANIFOLD for Drum 2" Fine thread, 4-port with (3) 1/4" NPT, (1) 1/2" NPT, Polypropylene	(3) 1/4 NPT, (1) 1/2 NPT	PP
MTD2F-4	WASTE MANIFOLD for Drum 2" Fine thread, 4-port with (3) 1/4" NPT, (1) 1/2" NPT, PTFE	(3) 1/4 NPT, (1) 1/2 NPT	PTFE
MPD2F-10	WASTE MANIFOLD for Drum 2" Fine thread, 10-port with (1) 1/2" NPT, (3) 1/4" NPT, (6) 1/4-28, Polypropylene	(1) 1/2 NPT, (3) 1/4 NPT, (6) 1/4-28	PP
MTD2F-10	WASTE MANIFOLD for Drum 2" Fine thread, 10-port with (1) 1/2" NPT, (3) 1/4" NPT, (6) 1/4-28, PTFE	(1) 1/2 NPT, (3) 1/4 NPT, (6) 1/4-28	PTFE

## DRUM WASTE KITS (2" FINE THREAD)

VAPLOCK™ Closed Systems for solvent containment minimizes leaks, spills, and vapor escape from solvent waste and supply containers. Use Vaplock™ kits to provide an effective means of sealed solvent delivery, and select from waste containment kits to collect effluents while minimizing harmful solvent exhaust. All Vaplock™ products are designed for ease of use and adaptability, and will conform to a broad range of standard laboratory solvent containers. Waste Accessory Kits include a solvent collection manifold, an organic solvent exhaust filter with breakthrough indicator, and adapters, plugs, and tubing connections required for installation on typical HPLC instruments.

- Minimize exposure to harmful chemical vapors
- Collect solvent waste from multiple effluent streams
- Highly adaptable and conforms to a broad range of containment types

### Kit Contents

- 10-port Waste Manifold
- (3) 1/4" NPT Polypropylene Plugs
- (6) 1/4-28 PTFE Plugs
- (1) 1/2 NPT Polypropylene Plug
- (1) Organic Vapor Filter
- (2) 2.2mm OD hard wall tubing connections
- (1) 2.5mm OD hard wall tubing connection
- (3) 1/8" OD hard wall tubing connections
- (2) 1/16" OD hard wall tubing connections
- (3) BARBED TUBING CONNECTION 1/4 ID tubing x 1/4 NPT Polypropylene
- (1) BARBED TUBING CONNECTION 1/8 ID tubing x 1/4 NPT Polypropylene
- (1) BARBED TUBING CONNECTION 3/16 ID tubing x 1/4 NPT Polypropylene
- (1) BARBED TUBING CONNECTION 3/8 ID tubing x 1/4 NPT Polypropylene
- (1) BARB TO BARB Y CONNECTOR with 1/4" (6.25mm) Barbs, Polypropylene
- (1) HARDWALL TUBE EXTENSION includes union connections and 5 feet 1/8 OD PTFE tubing
- (1) FILTER ADAPTER 1/4 NPT x 1/2 NPT polypropylene
- (1) BREAKTHROUGH COLOR INDICATOR for Vaplock™ organic vapor filter

Container Not Included.



Part #	Description	# Ports	Manifold Material
MPD2F-10K	HPLC WASTE ACCESSORY KIT for Drum 2" Fine thread, 10-port with (1) 1/2" NPT, (3) 1/4" NPT, (6) 1/4-28; includes Polypropylene Manifold, Fittings Kit, Exhaust Filter with adapter and color indicator	(1) 1/2 NPT, (3) 1/4 NPT, (6) 1/4-28	PP
MTD2F-10K	HPLC WASTE ACCESSORY KIT for Drum 2" Fine thread, 10-port with (1) 1/2" NPT, (3) 1/4" NPT, (6) 1/4-28; includes PTFE Manifold, Fittings Kit, Exhaust Filter with adapter and color indicator	(1) 1/2 NPT, (3) 1/4 NPT, (6) 1/4-28	PTFE

### Waste Kits



MPD2C-10

## DRUM WASTE CAPS (2" COARSE THREAD)

### Vapor Tight Connection

Waste manifolds are designed to fit US standard 2" drum bung with fine threads.

### Chemical Resistance

Materials of construction include your choice of Polypropylene or PTFE manifold with Polypropylene drum thread adapter.

### Versatile Configuration

Manifolds can be configured for barbed connections, compression fittings, 1/4-28 fitting and ferrule sets. All manifolds are designed to accommodate our CF-100 Filter and indicator.

\*See the emissions filter section of our catalog

## Manifold Caps

Part #	Description	# Ports	Manifold Material
MPD2C-4	WASTE MANIFOLD for Drum 2" course thread, 4-port with (3) 1/4" NPT, (1) 1/2" NPT, Polypropylene	(3) 1/4 NPT, (1) 1/2 NPT	PP
MTD2C-4	WASTE MANIFOLD for Drum 2" course thread, 4-port with (3) 1/4" NPT, (1) 1/2" NPT, PTFE	(3) 1/4 NPT, (1) 1/2 NPT	PTFE
MPD2C-10	WASTE MANIFOLD for Drum 2" course thread, 10-port with (1) 1/2" NPT, (3) 1/4" NPT, (6) 1/4-28, Polypropylene	(1) 1/2 NPT, (3) 1/4 NPT, (6) 1/4-28	PP
MTD2C-10	WASTE MANIFOLD for Drum 2" course thread, 10-port with (1) 1/2" NPT, (3) 1/4" NPT, (6) 1/4-28, PTFE	(1) 1/2 NPT, (3) 1/4 NPT, (6) 1/4-28	PTFE

## DRUM WASTE KITS (2" COARSE THREAD)

VAPLOCK™ Closed Systems for solvent containment minimizes leaks, spills, and vapor escape from solvent waste and supply containers. Use Vaplock™ kits to provide an effective means of sealed solvent delivery, and select from waste containment kits to collect effluents while minimizing harmful solvent exhaust. All Vaplock™ products are designed for ease of use and adaptability, and will conform to a broad range of standard laboratory solvent containers. Waste Accessory Kits include a solvent collection manifold, an organic solvent exhaust filter with breakthrough indicator, and adapters, plugs, and tubing connections required for installation on typical HPLC instruments.

- Minimize exposure to harmful chemical vapors
- Collect solvent waste from multiple effluent streams
- Highly adaptable and conforms to a broad range of containment types

### Kit Contents

- 10-port Waste Manifold
- (3) 1/4" NPT Polypropylene Plugs
- (6) 1/4-28 PTFE Plugs
- (1) 1/2 NPT Polypropylene Plug
- (1) Organic Vapor Filter
- (2) 2.2mm OD hard wall tubing connections
- (1) 2.5mm OD hard wall tubing connection
- (3) 1/8" OD hard wall tubing connections
- (2) 1/16" OD hard wall tubing connections
- (3) BARBED TUBING CONNECTION 1/4 ID tubing x 1/4 NPT Polypropylene
- (1) BARBED TUBING CONNECTION 1/8 ID tubing x 1/4 NPT Polypropylene
- (1) BARBED TUBING CONNECTION 3/16 ID tubing x 1/4 NPT Polypropylene
- (1) BARBED TUBING CONNECTION 3/8 ID tubing x 1/4 NPT Polypropylene
- (1) BARB TO BARB Y CONNECTOR with 1/4" (6.25mm) Barbs, Polypropylene
- (1) HARDWALL TUBE EXTENSION includes union connections and 5 feet 1/8 OD PTFE tubing
- (1) FILTER ADAPTER 1/4 NPT x 1/2 NPT polypropylene
- (1) BREAKTHROUGH COLOR INDICATOR for Vaplock™ organic vapor filter

Container Not Included.



Part #	Description	# Ports	Manifold Material
MPD2C-10K	HPLC WASTE ACCESSORY KIT for Drum 2" course thread, 10-port with (1) 1/2" NPT, (3) 1/4" NPT, (6) 1/4-28; includes Polypropylene Manifold, Fittings Kit, Exhaust Filter with adapter and color indicator	(1) 1/2 NPT, (3) 1/4 NPT, (6) 1/4-28	PP
MTD2C-10K	HPLC WASTE ACCESSORY KIT for Drum 2" course thread, 10-port with (1) 1/2" NPT, (3) 1/4" NPT, (6) 1/4-28; includes PTFE Manifold, Fittings Kit, Exhaust Filter with adapter and color indicator	(1) 1/2 NPT, (3) 1/4 NPT, (6) 1/4-28	PTFE

### Waste Kits





MPPM-10



MPPM-4

## PANEL MOUNT WASTE CAPS

### Vapor Tight Connection

Waste manifolds are configured to fit an aperture drilled to 1-1/4" ID, with panel thickness of 1/16" - 1/2". An area 1-3/4" diameter free of obstruction around the aperture is required for use. Manifold drains to a 1/2" NPT common port at the base.

\*Inquire for cam lock and quick disconnect options

### Chemical Resistance

Materials of construction include your choice of Polypropylene or PTFE manifold and lock nut.

### Versatile Configuration

Manifolds can be configured for barbed connections, compression fittings, 1/4-28 fitting and ferrule sets. All manifolds are designed to accommodate our CF-100 Filter and indicator.

\*See the emissions filter section of our catalog

## Manifold Caps

Part #	Description	# Ports	Manifold Material
MPPM-4	WASTE MANIFOLD, Panel-mount, 4-port with (3) 1/4" NPT, (1) 1/2" NPT, Polypropylene	(3) 1/4 NPT, (1) 1/2 NPT	PP
MTPM-4	WASTE MANIFOLD, Panel-mount, 4-port with (3) 1/4" NPT, (1) 1/2" NPT, PTFE	(3) 1/4 NPT, (1) 1/2 NPT	PTFE
MPPM-10	WASTE MANIFOLD, Panel-mount, 10-port with (1) 1/2" NPT, (3) 1/4" NPT, (6) 1/4-28, Polypropylene	(1) 1/2 NPT, (3) 1/4 NPT, (6) 1/4-28	PP
MTPM-10	WASTE MANIFOLD, Panel-mount, 10-port with (1) 1/2" NPT, (3) 1/4" NPT, (6) 1/4-28, PTFE	(1) 1/2 NPT, (3) 1/4 NPT, (6) 1/4-28	PTFE



## PANEL MOUNT WASTE KITS

VAPLOCK™ Closed Systems for solvent containment minimizes leaks, spills, and vapor escape from solvent waste and supply containers. Use Vaplock™ kits to provide an effective means of sealed solvent delivery, and select from waste containment kits to collect effluents while minimizing harmful solvent exhaust. All Vaplock™ products are designed for ease of use and adaptability, and will conform to a broad range of standard laboratory solvent containers. Waste Accessory Kits include a solvent collection manifold, an organic solvent exhaust filter with breakthrough indicator, and adapters, plugs, and tubing connections required for installation on typical HPLC instruments.

- Minimize exposure to harmful chemical vapors
- Collect solvent waste from multiple effluent streams
- Highly adaptable and conforms to a broad range of containment types

### Kit Contents

- 10-port Waste Manifold
- (3) 1/4" NPT Polypropylene Plugs
- (6) 1/4-28 PTFE Plugs
- (1) 1/2 NPT Polypropylene Plug
- (1) Organic Vapor Filter
- (2) 2.2mm OD hard wall tubing connections
- (1) 2.5mm OD hard wall tubing connection
- (3) 1/8" OD hard wall tubing connections
- (2) 1/16" OD hard wall tubing connections
- (3) BARBED TUBING CONNECTION 1/4 ID tubing x 1/4 NPT Polypropylene
- (1) BARBED TUBING CONNECTION 1/8 ID tubing x 1/4 NPT Polypropylene
- (1) BARBED TUBING CONNECTION 3/16 ID tubing x 1/4 NPT Polypropylene
- (1) BARBED TUBING CONNECTION 3/8 ID tubing x 1/4 NPT Polypropylene
- (1) BARB TO BARB Y CONNECTOR with 1/4" (6.25mm) Barbs, Polypropylene
- (1) HARDWALL TUBE EXTENSION includes union connections and 5 feet 1/8 OD PTFE tubing
- (1) FILTER ADAPTER 1/4 NPT x 1/2 NPT polypropylene
- (1) BREAKTHROUGH COLOR INDICATOR for Vaplock™ organic vapor filter

Container Not Included.



Part #	Description	# Ports	Manifold Material
MPPM-10K	HPLC WASTE ACCESSORY KIT for Panel Mount, 10-port with (1) 1/2" NPT, (3) 1/4" NPT, (6) 1/4-28; includes Polypropylene Manifold, Fittings Kit, Exhaust Filter with adapter and color indicator	(1) 1/2 NPT, (3) 1/4 NPT, (6) 1/4-28	PP
MTPM-10K	HPLC WASTE ACCESSORY KIT for Panel Mount, 10-port with (1) 1/2" NPT, (3) 1/4" NPT, (6) 1/4-28; includes PTFE Manifold, Fittings Kit, Exhaust Filter with adapter and color indicator	(1) 1/2 NPT, (3) 1/4 NPT, (6) 1/4-28	PTFE

### Waste Kits



CF-100 / CF-100V



CF-200

## CHEMICAL EXHAUST FILTERS

### Emission Reduction

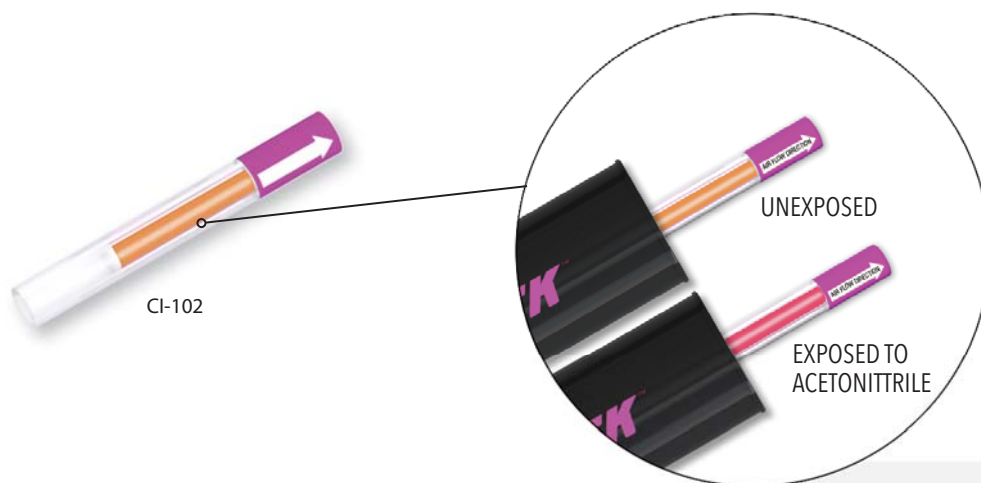
Use Vaplock exhaust filters to mitigate health hazards and reduce harmful chemical emissions and odors from laboratory solvent containers. Developed and tested specifically for HPLC organic solvents, they may be used in conjunction with Vaplock break-through color indicators to determine longevity and establish a replacement schedule.

### Adaptable Design

Available in 75g and 300g cartridge sizes, Vaplock filters include activated media for organic solvents and are constructed of an HDPE housing with 1/4" NPT female receiving port. Attach to various point emission sources with Vaplock Filter Adapters. Please inquire for other sizes and formats.

### Filter Details

Part #	Description	Indicator Included
CF-100	VAPLOCK EXHAUST FILTER, 75g with 1/4" NPT female port	NO
CF-100V	VAPLOCK EXHAUST FILTER, 75g with 1/4" NPT female port, 5/PK	NO
CF-102	VAPLOCK EXHAUST FILTER KIT with indicator, 75g with 1/4" NPT female port	YES
CF-200	VAPLOCK EXHAUST FILTER, 300g with 1/4" NPT female port	NO



## BREAKTHROUGH INDICATORS

### Colorimetric Change

Designed to detect the end-of-service life for Vaplock exhaust filters, breakthrough indicators respond under exposure to organic solvent vapors. Final effects display within minutes or hours of exposure. Color saturation varies by solvent. Replace the exhaust filter when a variation occurs. Housing is acrylic, with borosilicate glass option available.

### Multiple Solvent Detection

Breakthrough Indicators may be used with the following chemicals. This list is not comprehensive. Please inquire for detection of other organic solvents: Acetone, Acetonitrile, Acids (i.e. Acetic Acid, Hydrochloric Acid, Trifluoroacetic Acid, Trichloroacetic Acid), Acrylonitrile, Aliphatic hydrocarbons (i.e. Hexane), Aromatic Hydrocarbons (i.e. Benzene, Toluene and Xylenes), Chlorinated hydrocarbons (i.e. Carbon Tetrachloride, Chloroform and Methylene Chloride), Ethanol, Ethyl Acetate, Ethyl Acrylate, Ethyl Ether, Gasoline, HFIP (Hexafluoroisopropanol), Methanol, Methyl Acrylate, Naphtha, Phenol, Sulfolane, THF (Tetrahydrofuran).

### Product Usage

Not for use in the presence of basic vapors in high concentrations (i.e. Pyridine and aliphatic amines), which impair performance of the indicator. Does not respond to gaseous aliphatic hydrocarbons or aldehydes. Avoid Exposure to heat or direct sunlight. Use only at room temperature. Shelf life is 12 months. For analytical research purposes only.

## Indicator Details

Part #	Description	Filter Included
CI-102	BREAKTHROUGH INDICATOR for Vaplock exhaust filters	NO
CI-102V	BREAKTHROUGH INDICATOR for Vaplock exhaust filters , 5/PK	NO
CF-102	VAPLOCK EXHAUST FILTER KIT with indicator, 75g with 1/4" NPT female port	YES



FA-14LL



FA-1414



FA-1412



FA-PQD



FA-901412



FA-SQD



FA-90PQD



FA-90SQD



FA-451414

## FILTER ADAPTERS

### Versatile Configurations

Vaplock CF-100 and CF-200 exhaust filters may be attached to various point-source emissions by use of the appropriate adapter. Each filter includes a 1/4" female NPT port; select from the list below to adapt filters to a typical system, or inquire for assistance with special requirements. All adapters are reusable. Please note that options for Justrite® safety containers are made to fit either stainless steel or polypropylene quick disconnects, but are not interchangeable.

### Carbon Filter Adapters (page 1 of 2)

Part #	Description	Adapter Type	Material
FA-14LL	FILTER ADAPTER luer lock x 1/4 NPT natural Polypropylene	Straight	Polypropylene
FA-1414	FILTER ADAPTER 1/4 NPT x 1/4 NPT polypropylene	Straight	Polypropylene
FA-1412	FILTER ADAPTER 1/4 NPT x 1/2 NPT polypropylene	Straight	Polypropylene
FA-PQD	FILTER ADAPTER with PP and EPDM Quick Disconnect for Justrite Centura containers	Straight	Polypropylene EPDM
FA-901412	FILTER ADAPTER, 90 degree elbow, 1/4" NPT x 1/2" NPT, polypropylene	90 Degree Elbow	Polypropylene
FA-SQD	FILTER ADAPTER with SS and Teflon quick disconnect for Justrite Centura containers	Straight	Stainless Steel Teflon
FA-90PQD	FILTER ADAPTER 90 degree elbow with Polypropylene and EPDM Quick Disconnect for Justrite Centura containers	90 Degree Elbow	Polypropylene EPDM
FA-90SQD	FILTER ADAPTER, 90 degree elbow, with SS and Teflon Quick Disconnect for Justrite Centura containers	90 Degree Elbow	Stainless Steel Teflon
FA-451414	FILTER ADAPTER, 45 degree elbow, 1/4" MNPT x 1/4" MNPT, Nylon	45 Degree Elbow	Nylon



FA-901414



FA-2814



FA-A1414



FA-A1412



FA-APQD



FA-ASQD



FA-1418

## FILTER ADAPTERS

### Versatile Configurations

Vaplock CF-100 and CF-200 exhaust filters may be attached to various point-source emissions by use of the appropriate adapter. Each filter includes a 1/4" female NPT port; select from the list below to adapt filters to a typical system, or inquire for assistance with special requirements. All adapters are reusable. Please note that options for Justrite® safety containers are made to fit either stainless steel or polypropylene quick disconnects, but are not interchangeable.

### Carbon Filter Adapters (page 2 of 2)

Part #	Description	Adapter Type	Material
FA-901414	FILTER ADAPTER, 90 degree elbow, 1/4" MNPT x 1/4" MNPT, Polypropylene	90 Degree Elbow	Polypropylene
FA-2814	FILTER ADAPTER, 1/4" NPT male x 1/4-28 male, red PEEK	Straight	PEEK
FA-A1414	ADJUSTABLE FILTER ADAPTER for 1/4" NPT female port, black acetal	Adjustable	Acetal
FA-A1412	ADJUSTABLE FILTER ADAPTER for 1/2" NPT female port, black acetal	Adjustable	Acetal
FA-APQD	ADJUSTABLE FILTER ADAPTER, with PP and EPDM Quick Disconnect for Justrite Centura containers, black acetal	Adjustable	Polypropylene EPDM, Acetal
FA-ASQD	ADJUSTABLE FILTER ADAPTER, with SS and Teflon Quick Disconnect for Justrite Centura containers, black acetal	Adjustable	SS , EPDM Acetal
FA-1418	FILTER ADAPTER, 1/8" NPT x 1/4" NPT, polypropylene	Straight	Polypropylene



CF-4024



CF-31624



CF-11628X



CF-2028X



CF-2228X



CF-2528X



CF-3028X



CF-1828X

## TUBING CONNECTIONS

### For 1/4-28 and 5/16-24 UNF Ports

Compression fittings designed for liquid-tight connection of semi-rigid tubing to flat-bottom 1/4-28 and 5/16-24 port threads, for tubing diameters 1/16" to 3/16" OD. Each connection is comprised of a two-piece nut and ferrule system, useful for pressurized applications under 500 psi. Make a selection based on your tubing outside diameter (OD); fittings are color-coded by tubing size for easy identification. These bottom-sealing UNF fittings do not require PTFE tape. Part numbers ending "X" denote a pack of 10 fittings.

### Fittings for Semi-Rigid Tubing

Part #	Description	Color	Tubing OD
CF-4024	TUBING CONNECTION, 4.0mm OD tubing x 5/16-24, natural Kel-F ferrule.	Brown	4 mm
CF-31624	TUBING CONNECTION, 3/16" OD tubing x 5/16-24, natural Kel-F ferrule.	White	3/16 in
CF-11628X	TUBING CONNECTION, 1/16" OD tubing x 1/4-28, Green Polypropylene fitting, Blue Tefzel ferrule. 10/PK	Green	1/16 in
CF-2028X	TUBING CONNECTION, 1.8-2.0mm OD tubing x 1/4-28, Red Polypropylene fitting, Green Tefzel ferrule. 10/PK	Red	1.8-2.0 mm
CF-2228X	TUBING CONNECTION, 2.2mm (.085") OD tubing x 1/4-28, Black Polypropylene fitting, White PTFE ferrule. 10/PK	Black	2.2 mm
CF-2528X	TUBING CONNECTION, 2.5mm OD tubing x 1/4-28, Orange Polypropylene fitting, Natural Tefzel ferrule. 10/PK	Orange	2.5 mm
CF-3028X	TUBING CONNECTION, 3.0mm OD tubing x 1/4-28, Yellow Polypropylene fitting, Orange Tefzel ferrule. 10/PK	Yellow	3.0 mm
CF-1828X	TUBING CONNECTION, 1/8" OD tubing x 1/4-28, Blue Polypropylene fitting, Yellow Tefzel ferrule. 10/PK	Blue	1/8 in





CF-4014



CF-31614



CF-1614



CF-2014



CF-2214



CF-2514



CF-3014



CF-1814

## TUBING CONNECTION ADAPTERS

### For 1/4" NPT Ports

Compression fittings designed for liquid-tight connection of semi-rigid tubing to 1/4" NPT ports, for tubing diameters 1/16" to 3/16" OD. Each connection is comprised of a two-piece nut and ferrule system with polypropylene thread adapter. Useful for pressurized applications under 500 psi. Make a selection based on your tubing outside diameter (OD); fittings are color-coded by tubing size for easy identification. Wrap NPT threads 3-4 times with PTFE tape and wrench tighten for leak-resistant connections.

### Fittings for Semi-Rigid Tubing

Part #	Description	OD	Thread	Material	Color
CF-4014	TUBING CONNECTION 4.0mm OD tubing x 1/4" NPT natural PTFE fitting natural Kel-F ferrule PP body.	4 mm	1/4" NPT	Polypropylene [PEEK] Tefzel®	Brown
CF-31614	TUBING CONNECTION 3/16 OD tubing x 1/4" NPT white Delrin fitting blue Tefzel ferrule PP body.	3/16 in	1/4" NPT	Polypropylene [Tefzel®] Derlin	White
CF-1614	TUBING CONNECTION, 1/16" OD tubing x 1/4" NPT, green Polypropylene fitting, Blue Tefzel ferrule, PP adapter.	1/16 in	1/4" NPT	Polypropylene Tefzel®	Green
CF-2014	TUBING CONNECTION, 1.8-2.0mm OD tubing x 1/4" NPT, red Polypropylene fitting, Green Tefzel ferrule, PP adapter.	1.8-2 mm	1/4" NPT	Polypropylene Tefzel®	Red
CF-2214	TUBING CONNECTION, 2.2mm OD tubing x 1/4" NPT, black Polypropylene fitting, natural Tefzel ferrule, PP adapter.	2.2 mm	1/4" NPT	Polypropylene Tefzel®	Black
CF-2514	TUBING CONNECTION, 2.5mm OD tubing x 1/4" NPT, orange Polypropylene fitting, Natural Tefzel ferrule, PP adapter.	2.5 mm	1/4" NPT	Polypropylene Tefzel®	Orange
CF-3014	TUBING CONNECTION, 3.0mm OD tubing x 1/4" NPT, yellow 3 mm Polypropylene fitting, Orange Tefzel ferrule, PP adapter.	3 mm	1/4" NPT	Polypropylene Tefzel®	Yellow
CF-1814	TUBING CONNECTION, 1/8" OD tubing x 1/4" NPT, blue Polypropylene fitting, Yellow Tefzel ferrule, PP adapter.	1/8 in	1/4" NPT	Polypropylene Tefzel®	Blue



BF-11614X



BF-1814X



BF-31614X



BF-1414X



BF-51614X



BF-3814X



BF-1214X



BF-53214X



BF-11618X



BF-1818X

## BARBED TUBING CONNECTIONS

### For 1/8", 1/4", and 1/2" NPT Ports

A semi-permanent connection for soft-walled tubing only, barbed fittings are an economical means of connecting tubing to Vaplock manifold ports with NPT threads. For tubing diameters 1/16" to 1/2" ID. All fittings are Polypropylene. Make a selection based on your tubing inside diameter (ID). Wrap NPT threads 3-4 times with PTFE tape and wrench tighten for leak-resistant connections. Part numbers ending "X" denote a pack of 10 fittings.

### Fittings for Soft-Wall Tubing (page 1 of 2)

Part #	Description	Tubing ID	Thread
BF-11614X	BARBED TUBING CONNECTION, 1/16" ID tubing x 1/4" NPT, Polypropylene 10/PK	1/16 in	1/4" NPT
BF-1814X	BARBED TUBING CONNECTION, 1/8" ID tubing x 1/4" NPT, Polypropylene 10/PK	1/8 in	1/4" NPT
BF-31614X	BARBED TUBING CONNECTION, 3/16" ID tubing x 1/4" NPT, Polypropylene 10/PK	3/16 in	1/4" NPT
BF-1414X	BARBED TUBING CONNECTION, 1/4" ID tubing x 1/4" NPT, Polypropylene 10/PK	1/4 in	1/4" NPT
BF-51614X	BARBED TUBING CONNECTION, 5/16" ID tubing x 1/4" NPT, Polypropylene 10/PK	5/16 in	1/4" NPT
BF-3814X	BARBED TUBING CONNECTION, 3/8" ID tubing x 1/4" NPT, Polypropylene 10/PK	3/8 in	1/4" NPT
BF-1214X	BARBED TUBING CONNECTION, 1/2" ID tubing x 1/4" NPT, Polypropylene 10/PK	1/2 in	1/4" NPT
BF-53214X	BARBED TUBING CONNECTION, 5/32" ID tubing x 1/4" NPT, Polypropylene 10/PK	5/32 in	1/4" NPT
BF-11618X	BARBED TUBING CONNECTION, 1/16" ID tubing x 1/8" NPT, Polypropylene 10/PK	1/16 in	1/8" NPT
BF-1818X	BARBED TUBING CONNECTION, 1/8" ID tubing x 1/8" NPT, Polypropylene 10/PK	1/8 in	1/8" NPT



BF-31618X



BF-1418X



BF-51618X



BF-3818X



BF-1412X



BF-3812X



BF-1212X



BF-5812X



BF-3412X

## BARBED TUBING CONNECTIONS

### For 1/8", 1/4", and 1/2" NPT Ports

A semi-permanent connection for soft-walled tubing only, barbed fittings are an economical means of connecting tubing to Vaplock manifold ports with NPT threads. For tubing diameters 1/16" to 1/2" ID. All fittings are Polypropylene. Make a selection based on your tubing inside diameter (ID). Wrap NPT threads 3-4 times with PTFE tape and wrench tighten for leak-resistant connections. Part numbers ending "X" denote a pack of 10 fittings.

### Fittings for Soft-Wall Tubing (page 2 of 2)

Part #	Description	Tubing ID	Thread
BF-31618X	BARBED TUBING CONNECTION, 3/16" ID tubing x 1/8" NPT, Polypropylene 10/PK	3/16 in	1/8" NPT
BF-1418X	BARBED TUBING CONNECTION, 1/4" ID tubing x 1/8" NPT, Polypropylene 10/PK	1/4 in	1/8" NPT
BF-51618X	BARBED TUBING CONNECTION, 5/16" ID tubing x 1/8" NPT, Polypropylene 10/PK	5/16 in	1/8" NPT
BF-3818X	BARBED TUBING CONNECTION, 3/8" ID tubing x 1/8" NPT, Polypropylene 10/PK	3/8 in	1/8" NPT
BF-1412X	BARBED TUBING CONNECTION, 1/4" ID tubing x 1/2" NPT, Polypropylene 10/PK	1/4 in	1/2" NPT
BF-3812X	BARBED TUBING CONNECTION, 3/8" ID tubing x 1/2" NPT, Polypropylene 10/PK	3/8 in	1/2" NPT
BF-1212X	BARBED TUBING CONNECTION, 1/2" ID tubing x 1/2" NPT, Polypropylene 10/PK	1/2 in	1/2" NPT
BF-5812X	BARBED TUBING CONNECTION, 5/8" ID tubing x 1/2" NPT, Polypropylene 10/PK	5/8 in	1/2" NPT
BF-3412X	BARBED TUBING CONNECTION, 3/4" ID tubing x 1/2" NPT, Polypropylene 10/PK	3/4 in	1/2" NPT



CF-1414V



CF-51614V



CF-3814V



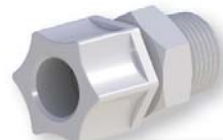
CF-1214V



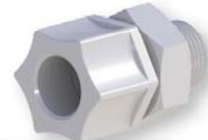
CF-3812V



CF-1212V



CF-5812V



CF-3412V

## LARGE-BORE TUBING CONNECTIONS

### For 1/4" NPT and 1/2" NPT Ports

Compression fittings designed for liquid-tight connection of semi-rigid tubing to NPT ports, for tubing diameters 1/4" to 3/4" OD. Useful for pressurized applications under 100 psi. Make a selection based on your tubing outside diameter (OD). All fittings are comprised of 2-piece molded Polypropylene components and do not include a separate ferrule. Wrap NPT threads 3-4 times with PTFE tape and wrench tighten for leak-resistant connections. Part numbers ending "V" denote a pack of 5 fittings.

### Fittings for Semi-Rigid Tubing

Part #	Description	OD	Thread	Material	Color
CF-1414V	TUBING CONNECTION 1/4 and 6mm OD tubing x 1/4 NPT Polypropylene 5-pack.	1/4 in	1/4" NPT	Polypropylene	Natural
CF-51614V	TUBING CONNECTION 5/16 OD tubing x 1/4 NPT Polypropylene 5-pack.	5/16 in	1/4" NPT	Polypropylene	Natural
CF-3814V	TUBING CONNECTION 3/8 OD tubing x 1/4 NPT Polypropylene 5-pack.	3/8 in	1/4" NPT	Polypropylene	Natural
CF-1214V	TUBING CONNECTION 1/2 OD tubing x 1/4 NPT Polypropylene 5-pack.	1/2 in	1/4" NPT	Polypropylene	Natural
CF-3812V	TUBING CONNECTION 3/8 OD tubing x 1/2 NPT Polypropylene 5-pack.	3/8 in	1/2" NPT	Polypropylene	Natural
CF-1212V	TUBING CONNECTION 1/2 OD tubing x 1/2 NPT Polypropylene 5-pack	1/2 in	1/2" NPT	Polypropylene	Natural
CF-5812V	TUBING CONNECTION 5/8 OD tubing x 1/2 NPT Polypropylene 5-pack.	5/8 in	1/2" NPT	Polypropylene	Natural
CF-3412V	TUBING CONNECTION 3/4 OD tubing x 1/2 NPT Polypropylene 5-pack.	3/4 in	1/2 NPT	Polypropylene	Natural



PP-14X



PP-12X



PP-28DX



PP-28TX



PP-14T



PP-38X



PP-18X



PP-24T

## PORT PLUGS

### For NPT and UNF Ports

Available in multiple materials, use the following plugs to seal unused manifold and bottle cap ports. Options for NPT ports are 1/8", 1/4", 3/8", and 1/2" NPT, and should be wrapped 3-4 times with PTFE tape for leak-resistant connections. Bottom-sealing UNF thread options include 1/4-28 and 5/16-24, and do not require PTFE tape. Part numbers ending "X" denote a pack of 10 plugs.

### Plugs

Part #	Description	Thread	Material
PP-14X	PLUGS, 1/4" NPT, Polypropylene, 10/PK	1/4" NPT	Polypropylene
PP-12X	PLUG, 1/2" NPT, Polypropylene 10/PK	1/2" NPT	Polypropylene
PP-28DX	PLUG, 1/4-28, black Delrin 10/PK	1/4-28	Delrin
PP-28TX	PLUG, 1/4-28, PTFE 10/PK	1/4-28	PTFE
PP-14T	PLUG, 1/4 NPT Male, PTFE	1/4"NPT	PTFE
PP-38X	PLUG, 3/8" NPT male, Polypropylene 10/PK	3/8" NPT	Polypropylene
PP-18X	PLUG, 1/8" NPT, Polypropylene 10/PK	1/8" NPT	Polypropylene
PP-24T	PLUG, 5/16-24, PTFE	5/16-24	PTFE



AI-1428F



AR-1414PF

## VENTILATION CONTROL VALVES

### For 1/4-28 and 1/4" NPT Ports

Although Vaplock solvent supply caps are available with built-in check valve elements, ventilation control valves may also be purchased as stand-alone units. With Air Inlet, Relief, and Reversible configurations, vent control valves may be selected in two cracking pressures and with Viton, EPDM, and FFKM seal materials. Air inlet valves permit air to enter a bottle to displace vacuum while solvent is pumped out to an instrument. Relief valves allow pressurized bottle contents to escape above the cracking pressure. Reversible valves may serve either purpose, air inlet or relief, depending on the orientation once installed.

### Evaporation Control and Relief Valves

Part #	Description	Thread	Cracking Pressure	Seal Material
AI-1428V	AIR INLET VALVE, 1/4-28 male, PTFE with Viton check element	1/4-28	0.1 - 0.25 psi	Viton
AI-1428E	AIR INLET VALVE, 1/4-28 male, PTFE with EPDM check element	1/4-28	0.1 - 0.25 psi	EPDM
AI-1428F	AIR INLET VALVE, 1/4-28 male, PTFE with FFKM check element	1/4-28	0.1 - 0.25 psi	FFKM
AO-1428V	RELIEF VALVE, 1/4-28 male, PTFE with Viton check element	1/4-28	0.1 - 0.25 psi	Viton
AO-1428E	RELIEF VALVE, 1/4-28 male, PTFE with EPDM check element	1/4-28	0.1 - 0.25 psi	EPDM
AO-1428F	RELIEF VALVE, 1/4-28 male, PTFE with FFKM check element	1/4-28	0.1 - 0.25 psi	FFKM
AO-1428VH	RELIEF VALVE, 1/4-28 male, PTFE with Viton check element	1/4-28	1 - 2.5 psi	Viton
AO-1428EH	RELIEF VALVE, 1/4-28 male, PTFE with EPDM check element	1/4-28	1 - 2.5 psi	EPDM
AO-1428FH	RELIEF VALVE, 1/4-28 male, PTFE with FFKM check element	1/4-28	1 - 2.5 psi	FFKM
AR-1414PV	REVERSIBLE CONTROL VALVE, 1/4" MNPT x 1/4" MNPT, Polypropylene with Viton check element	1/4" NPT	0.1 - 0.25 psi	Viton
AR-1414PE	REVERSIBLE CONTROL VALVE, 1/4" MNPT x 1/4" MNPT, Polypropylene with EPDM check element	1/4" NPT	0.1 - 0.25 psi	EPDM
AR-1414PF	REVERSIBLE CONTROL VALVE, 1/4" MNPT x 1/4" MNPT, Polypropylene with FFKM check element	1/4" NPT	0.1 - 0.25 psi	FFKM



- **CAPTURE WASTE**  
and hazardous solvents securely
- **REDUCE FUMES**  
and harmful vapor exhaust
- **QUICK CONNECT**  
to Justrite® Centura safety containers

SFPQD-4  
ON JUSTRITE  
PP12755

## Safety Funnel

### Versatile Configurations

VAPLOCK "SF Series" funnels allow for safer disposal of pourable laboratory waste. A locking, hinged lid minimizes leaks and spills when the funnel is closed. If used in tandem with other Vaplock products, such as a manifold and exhaust filter, a closed system may be maintained for passive wastes while the funnel is sealed.

Justrite Centura containers are available with two quick disconnect materials, Polypropylene (with EPDM o-ring) and Stainless Steel (with PTFE o-ring), select a safety funnel according to the type of disconnect material present on the safety container. SF-series funnels are constructed of high density Polyethylene (HDPE) and Polypropylene, with a Viton® sealing gasket. As with all solvent applications, chemical compatibility of the solvent and product should be noted prior to purchase.

## Safety Funnels

Part #	Safety Funnel Options
SFPQD-4	WITH POLYPROPYLENE DISCONNECT AND EPDM O-RING
SFSQD-4	WITH STAINLESS STEEL DISCONNECT AND PTFE O-RING
SFP12-4	NO QUICK DISCONNECT, WITH 1/2" NPT MALE THREAD

